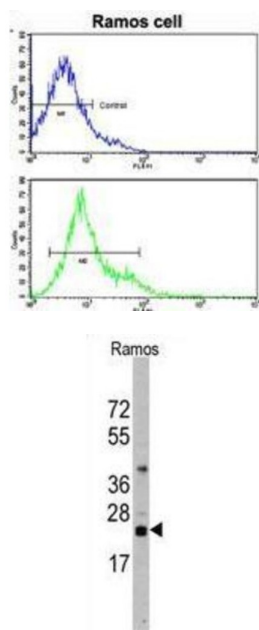


T-Cell Surface Glycoprotein CD3 Zeta Chain (CD247) Antibody

Catalogue No.: abx027824



T-cell receptor zeta, together with T-cell receptor alpha/beta and gamma/delta heterodimers, and with CD3-gamma, delta and epsilon, forms the T-cell receptor-CD3 complex. The zeta chain plays an important role in coupling antigen recognition to several intracellular signal-transduction pathways. Low expression of the antigen results in impaired immune response.

| | |
|-------------------------------|--|
| Target: | T-Cell Surface Glycoprotein CD3 Zeta Chain (CD247) |
| Clonality: | Polyclonal |
| Reactivity: | Human |
| Tested Applications: | ELISA, WB, FCM |
| Host: | Rabbit |
| Recommended dilutions: | WB: 1/1000, FCM: 1/10 - 1/50. Optimal dilutions/concentrations should be determined by the end user. |
| Conjugation: | Unconjugated |
| Immunogen: | KLH-conjugated synthetic peptide between 2-31 amino acids from the N-terminal region of human CD3Z. |
| Isotype: | IgG |
| Form: | Liquid |

Datasheet

Version: 3.0.0

Revision date: 06 Sep 2025



| | |
|----------------------------|--|
| Purification: | Purified through a protein A column, followed by peptide affinity purification. |
| Storage: | Aliquot and store at -20°C. Avoid repeated freeze/thaw cycles. |
| UniProt Primary AC: | P20963 (UniProt , ExPASy) |
| Gene Symbol: | CD3Z |
| Molecular Weight: | Calculated MW: 18.7 kDa |
| Buffer: | PBS containing 0.09% sodium azide. |
| Specificity: | Predicted to react with Pig CD247. |
| Note: | THIS PRODUCT IS FOR RESEARCH USE ONLY. NOT FOR USE IN DIAGNOSTIC, THERAPEUTIC OR COSMETIC PROCEDURES. NOT FOR HUMAN OR ANIMAL CONSUMPTION. |

For Reference Only