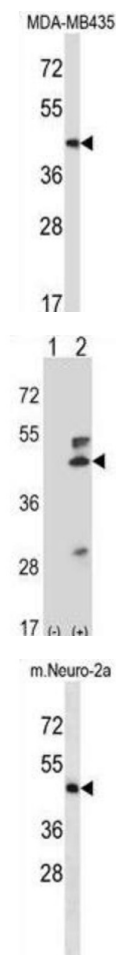


Dual Specificity Mitogen-Activated Protein Kinase Kinase 5 (Map2k5) Antibody

Catalogue No.: abx027839



Map2k5 acts as a scaffold for the formation of a ternary MAP3K2/MAP3K3-MAP3K5-MAPK7 signaling complex. Activation of this pathway appear to play a critical role in protecting cells from stress-induced apoptosis, neuronal survival and cardiac development and angiogenesis.

Target: Dual Specificity Mitogen-Activated Protein Kinase Kinase 5 (Map2k5)

Clonality: Polyclonal

Reactivity: Human, Mouse

Tested Applications: ELISA, WB

Host: Rabbit

Datasheet

Version: 3.0.0
Revision date: 05 Oct 2025



Recommended dilutions: WB: 1/1000. Optimal dilutions/concentrations should be determined by the end user.

Conjugation:	Unconjugated
Immunogen:	KLH-conjugated synthetic peptide between 385-412 amino acids from the C-terminal region of mouse Map2k5.
Isotype:	IgG
Form:	Liquid
Purification:	Purified through a protein A column, followed by peptide affinity purification.
Storage:	Aliquot and store at -20°C. Avoid repeated freeze/thaw cycles.
UniProt Primary AC:	Q9WVS7 (UniProt , ExPASy)
String:	10090.ENSMUSP00000034920
Molecular Weight:	Calculated MW: 50.1 kDa
Buffer:	PBS containing 0.09% sodium azide.
Specificity:	Predicted to react with Rat Map2k5.
Note:	THIS PRODUCT IS FOR RESEARCH USE ONLY. NOT FOR USE IN DIAGNOSTIC, THERAPEUTIC OR COSMETIC PROCEDURES. NOT FOR HUMAN OR ANIMAL CONSUMPTION.