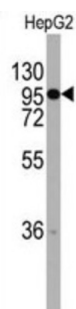
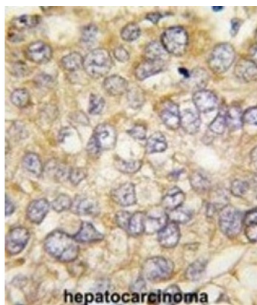


Chordin (CHRD) Antibody

Catalogue No.: abx027851



CHRD is a secreted protein that dorsalizes early vertebrate embryonic tissues by binding to ventralizing TGF-beta-like bone morphogenetic proteins and sequestering them in latent complexes. This protein may also have roles in organogenesis and during adulthood.

Target: Chordin (CHRD)

Clonality: Polyclonal

Reactivity: Human

Tested Applications: ELISA, WB, IHC

Host: Rabbit

Recommended dilutions: WB: 1/1000, IHC-P: 1/10 - 1/50. Not tested in IHC-F. Optimal dilutions/concentrations should be determined by the end user.

Conjugation: Unconjugated

Immunogen: KLH-conjugated synthetic peptide between 926-955 amino acids from the C-terminal region of human CHRD.

Isotype: IgG

Form: Liquid

Datasheet

Version: 2.0.0
Revision date: 15 Sep 2025



Purification:	Purified through a protein A column, followed by peptide affinity purification.
Storage:	Aliquot and store at -20°C. Avoid repeated freeze/thaw cycles.
UniProt Primary AC:	Q9H2X0 (UniProt , ExPASy)
Gene Symbol:	CHRD
NCBI Accession:	NP_003732.2
String:	9606.ENSP00000204604
Molecular Weight:	Calculated MW: 102 kDa
Buffer:	PBS containing 0.09% sodium azide.
Note:	THIS PRODUCT IS FOR RESEARCH USE ONLY. NOT FOR USE IN DIAGNOSTIC, THERAPEUTIC OR COSMETIC PROCEDURES. NOT FOR HUMAN OR ANIMAL CONSUMPTION.

For Reference Only