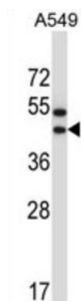


# Olfactory Receptor Family 56 Subfamily A Member 1 (OR56A1) Antibody

Catalogue No.: abx027859



Olfactory receptors interact with odorant molecules in the nose, to initiate a neuronal response that triggers the perception of a smell. The olfactory receptor proteins are members of a large family of G-protein-coupled receptors (GPCR) arising from single coding-exon genes. Olfactory receptors share a 7-transmembrane domain structure with many neurotransmitter and hormone receptors and are responsible for the recognition and G protein-mediated transduction of odorant signals. The olfactory receptor gene family is the largest in the genome. The nomenclature assigned to the olfactory receptor genes and proteins for this organism is independent of other organisms.

**Target:** Olfactory Receptor Family 56 Subfamily A Member 1 (OR56A1)

**Clonality:** Polyclonal

**Reactivity:** Human

**Tested Applications:** ELISA, WB

**Host:** Rabbit

**Recommended dilutions:** WB: 1/1000. Optimal dilutions/concentrations should be determined by the end user.

**Conjugation:** Unconjugated

**Immunogen:** KLH-conjugated synthetic peptide between 289-318 amino acids from the C-terminal region of human OR56A1.

**Isotype:** IgG

**Form:** Liquid

**Purification:** Purified through a protein A column, followed by peptide affinity purification.

**Storage:** Aliquot and store at -20°C. Avoid repeated freeze/thaw cycles.

# Datasheet

Version: 3.0.0

Revision date: 02 Jun 2025



**UniProt Primary AC:** Q8NGH5 ([UniProt](#), [ExPASy](#))

**Gene Symbol:** OR56A1

**KEGG:** hsa:120796

**String:** [9606.ENSP00000321246](#)

**Molecular Weight:** Calculated MW: 35.8 kDa

**Buffer:** PBS containing 0.09% sodium azide.

**Note:** THIS PRODUCT IS FOR RESEARCH USE ONLY. NOT FOR USE IN DIAGNOSTIC, THERAPEUTIC OR COSMETIC PROCEDURES. NOT FOR HUMAN OR ANIMAL CONSUMPTION.

For Reference Only