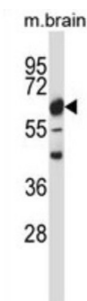


Calcium/Calmodulin Dependent Protein Kinase II Beta (CAMK2B) Antibody

Catalogue No.: abx027860



WB analysis of Mouse brain lysate (35 µg/lane) using Camk2b antibody. Camk2b detection is demonstrated by the arrow.

CaM-kinase II (CAMK2) is a prominent kinase in the central nervous system that may function in long-term potentiation and neurotransmitter release. Member of the NMDAR signaling complex in excitatory synapses it may regulate NMDAR-dependent potentiation of the AMPAR and synaptic plasticity (By similarity).

Target:	Calcium/Calmodulin Dependent Protein Kinase II Beta (CAMK2B)
Clonality:	Polyclonal
Reactivity:	Mouse
Tested Applications:	ELISA, WB
Host:	Rabbit
Recommended dilutions:	WB: 1/1000. Optimal dilutions/concentrations should be determined by the end user.
Conjugation:	Unconjugated
Immunogen:	KLH-conjugated synthetic peptide between 168-196 amino acids from the Central region of Mouse Camk2b.
Isotype:	IgG
Form:	Liquid
Purification:	Purified through a protein A column, followed by peptide affinity purification.
Storage:	Aliquot and store at -20°C. Avoid repeated freeze/thaw cycles.
UniProt Primary AC:	P28652 (UniProt , ExPASy)

Datasheet

Version: 5.0.0

Revision date: 15 Apr 2025



Gene Symbol: CAMK2B

GeneID: [12323](#)

KEGG: mmu:12323

String: [10090.ENSMUSP00000105438](#)

Molecular Weight: Calculated MW: 60.5 kDa

Buffer: PBS containing 0.09% sodium azide.

Specificity: Predicted to react with Human, Rat and Cow Camk2b.

Concentration: 0.4 mg/ml

Note: THIS PRODUCT IS FOR RESEARCH USE ONLY. NOT FOR USE IN DIAGNOSTIC, THERAPEUTIC OR COSMETIC PROCEDURES. NOT FOR HUMAN OR ANIMAL CONSUMPTION.

For Reference Only