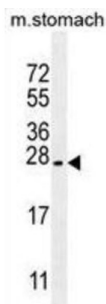
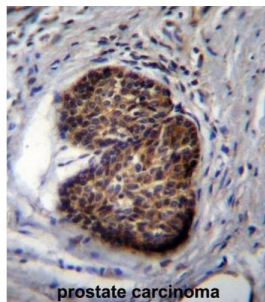


Prostate Stem Cell Antigen (PSCA) Antibody

Catalogue No.: abx027872



PSCA is a glycosylphosphatidylinositol-anchored cell membrane glycoprotein. In addition to being highly expressed in the prostate it is also expressed in the bladder, placenta, colon, kidney, and stomach. It is up-regulated in a large proportion of prostate cancers and is also detected in cancers of the bladder and pancreas.

| | |
|-------------------------------|--|
| Target: | Prostate Stem Cell Antigen (PSCA) |
| Clonality: | Polyclonal |
| Reactivity: | Human, Mouse |
| Tested Applications: | ELISA, WB, IHC |
| Host: | Rabbit |
| Recommended dilutions: | WB: 1/1000 - 1/2000, IHC-P: 1/10 - 1/50. Not tested in IHC-F. Optimal dilutions/concentrations should be determined by the end user. |
| Conjugation: | Unconjugated |
| Immunogen: | KLH-conjugated synthetic peptide between 56-85 amino acids from the Central region of human PSCA. |
| Isotype: | IgG |
| Form: | Liquid |

Datasheet

Version: 3.0.0

Revision date: 25 Aug 2025



| | |
|----------------------------|--|
| Purification: | Purified Rabbit Polyclonal Antibody. |
| Storage: | Aliquot and store at -20°C. Avoid repeated freeze/thaw cycles. |
| UniProt Primary AC: | O43653 (UniProt , ExPASy) |
| Gene Symbol: | PSCA |
| KEGG: | hsa:8000 |
| String: | 9606.ENSP00000301258 |
| Molecular Weight: | Calculated MW: 12 kDa |
| Buffer: | PBS containing 0.09% sodium azide. |
| Note: | THIS PRODUCT IS FOR RESEARCH USE ONLY. NOT FOR USE IN DIAGNOSTIC, THERAPEUTIC OR COSMETIC PROCEDURES. NOT FOR HUMAN OR ANIMAL CONSUMPTION. |

For Reference Only