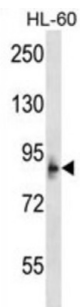


Microcephalin (MCPH1) Antibody

Catalogue No.: abx027884



This gene encodes a DNA damage response protein. The encoded protein may play a role in G2/M checkpoint arrest via maintenance of inhibitory phosphorylation of cyclin-dependent kinase 1. Mutations in this gene have been associated with primary autosomal recessive microcephaly 1 and premature chromosome condensation syndrome. Alternatively spliced transcript variants have been described.

Target: Microcephalin (MCPH1)

Clonality: Polyclonal

Reactivity: Human

Tested Applications: ELISA, WB

Host: Rabbit

Recommended dilutions: WB: 1/1000. Optimal dilutions/concentrations should be determined by the end user.

Conjugation: Unconjugated

Immunogen: KLH-conjugated synthetic peptide between 104-133 amino acids from the N-terminal region of human MCPH1.

Isotype: IgG

Form: Liquid

Purification: Purified through a protein A column, followed by peptide affinity purification.

Storage: Aliquot and store at -20°C. Avoid repeated freeze/thaw cycles.

UniProt Primary AC: Q8NEM0 ([UniProt](#), [ExPASy](#))

Gene Symbol: MCPH1

Datasheet

Version: 3.0.0

Revision date: 21 Aug 2025



KEGG: hsa:79648

String: [9606.ENSP00000342924](#)

Molecular Weight: Calculated MW: 92.8 kDa

Buffer: PBS containing 0.09% sodium azide.

Specificity: Predicted to react with Monkey MCPH1.

Note: THIS PRODUCT IS FOR RESEARCH USE ONLY. NOT FOR USE IN DIAGNOSTIC, THERAPEUTIC OR COSMETIC PROCEDURES. NOT FOR HUMAN OR ANIMAL CONSUMPTION.

For Reference Only