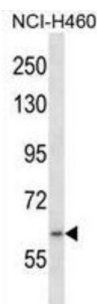
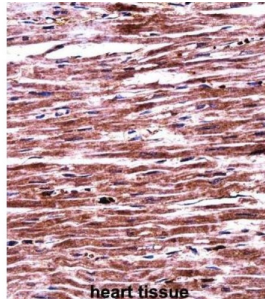


Ring Finger Protein 19A, RBR E3 Ubiquitin Protein Ligase (RNF19A) Antibody

Catalogue No.: abx027899



The protein encoded this gene contains two RING-finger motifs and an IBR (in between RING fingers) motif. This protein is an E3 ubiquitin ligase that is localized in Lewy bodies (LBs), a characteristic neuronal inclusion in Parkinson's disease (PD) brains. This protein interacts with UBE2L3/UBCH7 and UBE2E2/UBCH8, but not other ubiquitin-conjugating enzymes. This protein is found to bind and ubiquitylate synphilin 1 (SNCAIP), which is a interacting protein of alpha synuclein in neurons, and a major component of LB. Alternatively spliced transcript variants encoding the same protein have been reported.

Target: Ring Finger Protein 19A, RBR E3 Ubiquitin Protein Ligase (RNF19A)

Clonality: Polyclonal

Reactivity: Human

Tested Applications: ELISA, WB, IHC

Host: Rabbit

Recommended dilutions: WB: 1/1000, IHC-P: 1/10 - 1/50. Not tested in IHC-F. Optimal dilutions/concentrations should be determined by the end user.

Conjugation: Unconjugated

Immunogen: KLH-conjugated synthetic peptide between 384-413 amino acids from the Central region of human RNF19A.

Datasheet

Version: 3.0.0

Revision date: 01 Oct 2025



| | |
|----------------------------|--|
| Isotype: | IgG |
| Form: | Liquid |
| Purification: | Purified through a protein A column, followed by peptide affinity purification. |
| Storage: | Aliquot and store at -20°C. Avoid repeated freeze/thaw cycles. |
| UniProt Primary AC: | Q9NV58 (UniProt , ExPASy) |
| Gene Symbol: | RNF19A |
| String: | 9606.ENSP00000428968 |
| Molecular Weight: | Calculated MW: 90.7 kDa |
| Buffer: | PBS containing 0.09% sodium azide. |
| Specificity: | Predicted to react with Mouse and Pig RNF19A. |
| Note: | THIS PRODUCT IS FOR RESEARCH USE ONLY. NOT FOR USE IN DIAGNOSTIC, THERAPEUTIC OR COSMETIC PROCEDURES. NOT FOR HUMAN OR ANIMAL CONSUMPTION. |

For Reference Only