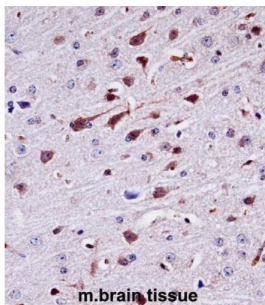


Protein-Tyrosine Kinase 2-Beta (Ptk2b) Antibody

Catalogue No.: abx027934



Involved in calcium induced regulation of ion channel and activation of the map kinase signaling pathway. May represent an important signaling intermediate between neuropeptide activated receptors or neurotransmitters that increase calcium flux and the downstream signals that regulate neuronal activity. Interacts with the SH2 domain of Grb2. May phosphorylate the voltage-gated potassium channel protein Kv1.2. Its activation is highly correlated with the stimulation of c-Jun N-terminal kinase activity. Involved in osmotic stress-dependent SNCA 'Tyr-125' phosphorylation (By similarity).

Target: Protein-Tyrosine Kinase 2-Beta (Ptk2b)

Clonality: Polyclonal

Reactivity: Human, Mouse

Tested Applications: ELISA, WB, IHC

Host: Rabbit

Datasheet

Version: 2.0.0
Revision date: 16 Jul 2025



Recommended dilutions:	WB: 1/1000, IHC-P: 1/10 - 1/50. Not tested in IHC-F. Optimal dilutions/concentrations should be determined by the end user.
Conjugation:	Unconjugated
Immunogen:	KLH-conjugated synthetic peptide between 672-701 amino acids from the Central region of mouse Ptk2b.
Isotype:	IgG
Form:	Liquid
Purification:	Purified through a protein A column, followed by peptide affinity purification.
Storage:	Aliquot and store at -20°C. Avoid repeated freeze/thaw cycles.
UniProt Primary AC:	Q9QVP9 (UniProt , ExPASy)
String:	10090.ENSMUSP00000106750
Molecular Weight:	Calculated MW: 116 kDa
Buffer:	PBS containing 0.09% sodium azide.
Note:	THIS PRODUCT IS FOR RESEARCH USE ONLY. NOT FOR USE IN DIAGNOSTIC, THERAPEUTIC OR COSMETIC PROCEDURES. NOT FOR HUMAN OR ANIMAL CONSUMPTION.