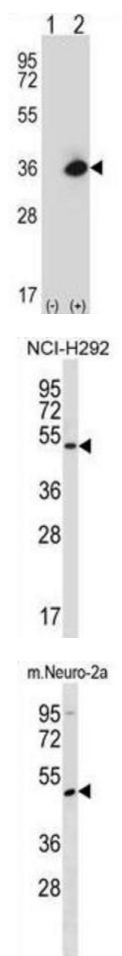


MAPK/MAK/MRK Overlapping Kinase (MOK) Antibody

Catalogue No.: abx027945



WB analysis of (1) non-transfected 293 cell lysates, and (2) 293 cell lysates transiently transfected with the MOK/RAGE gene.

WB analysis of NCI-H292 cell line lysates.

WB analysis of mouse Neuro-2a cell line lysates.

MOK (Rage) is able to phosphorylate several exogenous substrates and to undergo autophosphorylation.

Target: MAPK/MAK/MRK Overlapping Kinase (MOK)

Clonality: Polyclonal

Reactivity: Human, Mouse

Tested Applications: ELISA, WB

Host: Rabbit

Recommended dilutions: WB: 1/1000. Optimal dilutions/concentrations should be determined by the end user.

Conjugation: Unconjugated

Datasheet

Version: 6.0.0
Revision date: 24 Jun 2025



Immunogen:	KLH-conjugated synthetic peptide between 76-104 amino acids from the N-terminal region of mouse Mok/Rage.
Isotype:	IgG
Form:	Liquid
Purification:	Purified through a protein A column, followed by peptide affinity purification.
Storage:	Aliquot and store at -20°C. Avoid repeated freeze/thaw cycles.
UniProt Primary AC:	Q9WVS4 (UniProt , ExPASy)
String:	10090.ENSMUSP00000068904
Molecular Weight:	Calculated MW: 48.1 kDa
Buffer:	PBS containing 0.09% sodium azide.
Note:	THIS PRODUCT IS FOR RESEARCH USE ONLY. NOT FOR USE IN DIAGNOSTIC, THERAPEUTIC OR COSMETIC PROCEDURES. NOT FOR HUMAN OR ANIMAL CONSUMPTION.

For Reference Only