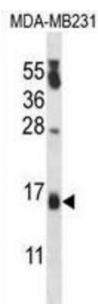
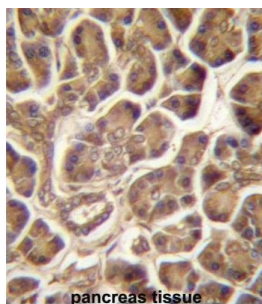


Cold Shock Domain-Containing Protein C2 / PIPPIN (CSDC2) Antibody

Catalogue No.: abx027963



WB analysis of MDA-MB231 cell lysates.



IHC-P analysis of human pancreas tissue, with DAB staining.

RNA-binding factor which binds specifically to the very 3'-UTR ends of both histone H1 and H3.3 mRNAs, encompassing the polyadenylation signal. Might play a central role in the negative regulation of histone variant synthesis in the developing brain (By similarity).

Target:	Cold Shock Domain-Containing Protein C2 / PIPPIN (CSDC2)
Clonality:	Polyclonal
Reactivity:	Human
Tested Applications:	ELISA, WB, IHC
Host:	Rabbit
Recommended dilutions:	WB: 1/1000, IHC-P: 1/10 - 1/50. Not tested in IHC-F. Optimal dilutions/concentrations should be determined by the end user.
Conjugation:	Unconjugated
Immunogen:	KLH-conjugated synthetic peptide between 76-105 amino acids from the Central region of human PIPPIN.
Isotype:	IgG
Form:	Liquid

Datasheet

Version: 3.0.0

Revision date: 25 Jun 2025



Purification:	Purified through a protein A column, followed by peptide affinity purification.
Storage:	Aliquot and store at -20°C. Avoid repeated freeze/thaw cycles.
UniProt Primary AC:	Q9Y534 (UniProt , ExPASy)
Gene Symbol:	CSDC2
GeneID:	27254
OMIM:	617689
HGNC:	30359
Ensembl:	ENSG00000172346
String:	9606.ENSP00000302485
Molecular Weight:	Calculated MW: 16.8 kDa
Buffer:	PBS containing 0.09% sodium azide.
Specificity:	Predicted to react with Mouse and Rat CSDC2.
Note:	THIS PRODUCT IS FOR RESEARCH USE ONLY. NOT FOR USE IN DIAGNOSTIC, THERAPEUTIC OR COSMETIC PROCEDURES. NOT FOR HUMAN OR ANIMAL CONSUMPTION.