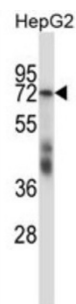


Steroidogenic Factor 1 (SF1) Antibody

Catalogue No.: abx027994



This gene encodes a nuclear pre-mRNA splicing factor. The encoded protein specifically recognizes the intron branch point sequence and is required for the early stages of spliceosome assembly. Alternate splicing results in multiple transcript variants.

Target:	Steroidogenic Factor 1 (SF1)
Clonality:	Polyclonal
Reactivity:	Human
Tested Applications:	ELISA, WB
Host:	Rabbit
Recommended dilutions:	WB: 1/1000. Optimal dilutions/concentrations should be determined by the end user.
Conjugation:	Unconjugated
Immunogen:	KLH-conjugated synthetic peptide between 212-241 amino acids from the Central region of human SF1.
Isotype:	IgG
Form:	Liquid
Purification:	Purified through a protein A column, followed by peptide affinity purification.
Storage:	Aliquot and store at -20°C. Avoid repeated freeze/thaw cycles.
UniProt Primary AC:	Q15637 (UniProt , ExPASy)
KEGG:	hsa:7536

Datasheet

Version: 3.0.0

Revision date: 12 Oct 2025



String: [9606.ENSF00000366604](#)

Molecular Weight: Calculated MW: 68.3 kDa

Buffer: PBS containing 0.09% sodium azide.

Specificity: Predicted to react with Mouse SF1.

Note: THIS PRODUCT IS FOR RESEARCH USE ONLY. NOT FOR USE IN DIAGNOSTIC, THERAPEUTIC OR COSMETIC PROCEDURES. NOT FOR HUMAN OR ANIMAL CONSUMPTION.

For Reference Only