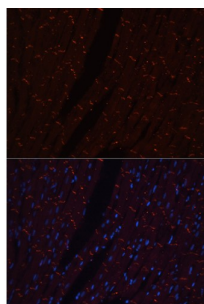
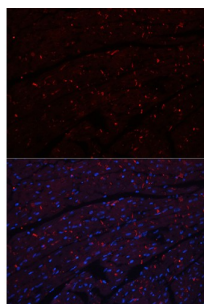


## Cadherin, Neuronal (CDH2) Antibody

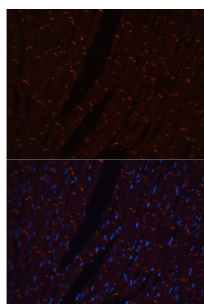
Catalogue No.: abx002200



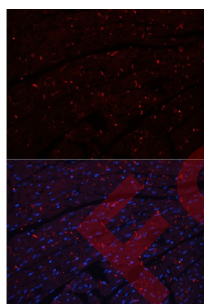
Western blot analysis of lysates from Mouse heart using N-Cadherin Antibody at 1/1000 dilution. Secondary antibody: HRP-conjugated Goat anti-Rabbit IgG (H+L) at 1/10000 dilution. Lysates/proteins: 25 µg per lane. Blocking buffer: 3% nonfat dry milk in TBST. Exposure time: 30s.



Immunohistochemistry analysis of paraffin-embedded Human liver tissue using N-Cadherin Antibody at a dilution of 1/100 (40x lens). High pressure antigen retrieval was performed in 0.01 M citrate buffer (pH 6.0) prior to IHC staining.



Immunohistochemistry analysis of paraffin-embedded Rat heart tissue using N-Cadherin Antibody at a dilution of 1/100 (40x lens). High pressure antigen retrieval was performed in 0.01 M citrate buffer (pH 6.0) prior to IHC staining.



Immunohistochemistry analysis of paraffin-embedded Mouse liver tissue using N-Cadherin Antibody at a dilution of 1/100 (40x lens). High pressure antigen retrieval was performed in 0.01 M citrate buffer (pH 6.0) prior to IHC staining.

CDH2 Antibody is a Rabbit Polyclonal antibody against CDH2. This gene is a classical cadherin from the cadherin superfamily. The encoded protein is a calcium dependent cell-cell adhesion glycoprotein comprised of five extracellular cadherin repeats, a transmembrane region and a highly conserved cytoplasmic tail. The protein functions during gastrulation and is required for establishment of left-right asymmetry. At certain central nervous system synapses, presynaptic to postsynaptic adhesion is mediated at least in part by this gene product.

**Target:** Cadherin, Neuronal (CDH2)

# Datasheet

Version: 3.0.0  
Revision date: 06 Jun 2025



<b>Clonality:</b>	Polyclonal
<b>Reactivity:</b>	Human, Mouse, Rat
<b>Tested Applications:</b>	ELISA, WB, IHC, IF/ICC
<b>Host:</b>	Rabbit
<b>Recommended dilutions:</b>	ELISA: 1 µg/ml, WB: 1/500 - 1/1000, IHC-P: 1/50 - 1/200, IF/ICC: 1/50 - 1/200. Not tested in IHC-F. Optimal dilutions/concentrations should be determined by the end user.
<b>Conjugation:</b>	Unconjugated
<b>Immunogen:</b>	Recombinant fusion protein containing a sequence corresponding to amino acids 488-587 of human N-Cadherin.
<b>Isotype:</b>	IgG
<b>Form:</b>	Liquid
<b>Purification:</b>	Purified by affinity chromatography.
<b>Storage:</b>	Aliquot and store at -20°C. Avoid repeated freeze/thaw cycles.
<b>UniProt Primary AC:</b>	P19022 ( <a href="#">UniProt</a> , <a href="#">ExPASy</a> )
<b>Gene Symbol:</b>	CDH2
<b>GeneID:</b>	<a href="#">1000</a>
<b>NCBI Accession:</b>	NP_001783.2
<b>KEGG:</b>	hsa:1000
<b>String:</b>	<a href="#">9606.ENSP00000269141</a>
<b>Molecular Weight:</b>	Calculated MW: 100 kDa Observed MW: 80/135 kDa
<b>Buffer:</b>	PBS, pH 7.3, containing 0.01% thimerosal, 50% glycerol.
<b>Concentration:</b>	> 0.2 mg/ml
<b>Note:</b>	THIS PRODUCT IS FOR RESEARCH USE ONLY. NOT FOR USE IN DIAGNOSTIC, THERAPEUTIC OR COSMETIC PROCEDURES. NOT FOR HUMAN OR ANIMAL CONSUMPTION.