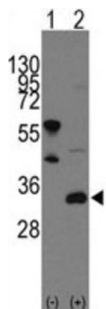
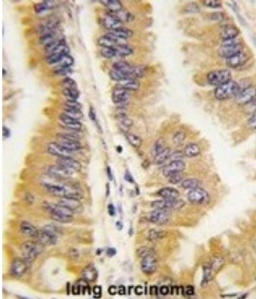


Frequently Rearranged In Advanced T-Cell Lymphomas 1 (FRAT1) Antibody

Catalogue No.: abx028003



FRAT1 belongs to the GSK-3-binding protein family. It may function in tumor progression and in lymphomagenesis.

Target:	Frequently Rearranged In Advanced T-Cell Lymphomas 1 (FRAT1)
Clonality:	Polyclonal
Reactivity:	Human
Tested Applications:	ELISA, WB, IHC
Host:	Rabbit
Recommended dilutions:	WB: 1/1000, IHC-P: 1/10 - 1/50. Not tested in IHC-F. Optimal dilutions/concentrations should be determined by the end user.
Conjugation:	Unconjugated
Immunogen:	KLH-conjugated synthetic peptide between 244-274 amino acids from the C-terminal region of human FRAT1.
Isotype:	IgG
Form:	Liquid

Datasheet

Version: 2.0.0
Revision date: 01 Jun 2025



Purification: Purified Rabbit Polyclonal Antibody.

Storage: Aliquot and store at -20°C. Avoid repeated freeze/thaw cycles.

UniProt Primary AC: Q92837 ([UniProt](#), [ExPASy](#))

KEGG: hsa:10023

String: [9606.ENSP00000360060](#)

Molecular Weight: Calculated MW: 29.1 kDa

Buffer: PBS containing 0.09% sodium azide.

Note: THIS PRODUCT IS FOR RESEARCH USE ONLY. NOT FOR USE IN DIAGNOSTIC, THERAPEUTIC OR COSMETIC PROCEDURES. NOT FOR HUMAN OR ANIMAL CONSUMPTION.

For Reference Only