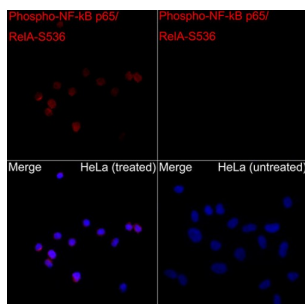
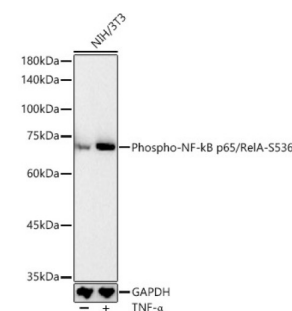


## RELA (pS536) Antibody

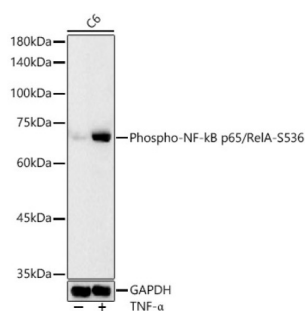
Catalogue No.: abx000176



Western blot analysis of lysates from HeLa cells using Phospho-NF-kB p65/RelA-S536 Antibody at 1/10000 dilution. HeLa cells were treated by TNF- $\alpha$  (50 ng/ml) and Calyculin A (50 nM) at 37 °C for 10 minutes. Secondary antibody: HRP-conjugated Goat anti-Rabbit IgG (H+L) at 1/10000 dilution. Lysates/proteins: 25  $\mu$ g per lane. Blocking buffer: 3% nonfat dry milk in TBST. Exposure time: 30s.



Western blot analysis of lysates from NIH/3T3 cells using Phospho-NF-kB p65/RelA-S536 Antibody at 1/10000 dilution. NIH/3T3 cells were treated by TNF- $\alpha$  (10 ng/ml) at 37 °C for 30 minutes. Secondary antibody: HRP-conjugated Goat anti-Rabbit IgG (H+L) at 1/10000 dilution. Lysates/proteins: 25  $\mu$ g per lane. Blocking buffer: 3% nonfat dry milk in TBST. Exposure time: 90s.



Western blot analysis of lysates from C6 cells using Phospho-NF-kB p65/RelA-S536 Antibody at 1/10000 dilution. C6 cells were treated by TNF- $\alpha$  (50 ng/ml) at 37 °C for 30 minutes. Secondary antibody: HRP-conjugated Goat anti-Rabbit IgG (H+L) at 1/10000 dilution. Lysates/proteins: 25  $\mu$ g per lane. Blocking buffer: 3% nonfat dry milk in TBST. Exposure time: 90s.

RELA (pS536) Antibody is a Rabbit Polyclonal antibody against RELA (pS536). NF-kappa-B is a ubiquitous transcription factor involved in several biological processes. It is held in the cytoplasm in an inactive state by specific inhibitors. Upon degradation of the inhibitor, NF-kappa-B moves to the nucleus and activates transcription of specific genes. NF-kappa-B is composed of NFKB1 or NFKB2 bound to either REL, RELA, or RELB. The most abundant form of NF-kappa-B is NFKB1 complexed with the product of this gene, RELA. Four transcript variants encoding different isoforms have been found for this gene.

|                             |                   |
|-----------------------------|-------------------|
| <b>Target:</b>              | RELA (pS536)      |
| <b>Clonality:</b>           | Polyclonal        |
| <b>Reactivity:</b>          | Human, Mouse, Rat |
| <b>Tested Applications:</b> | ELISA, WB, IF/ICC |
| <b>Host:</b>                | Rabbit            |

# Datasheet

Version: 6.0.0  
Revision date: 22 Jul 2025



**Recommended dilutions:** ELISA: 1 µg/ml, WB: 1/2000 - 1/10000, IF/ICC: 1/50 - 1/200. Optimal dilutions/concentrations should be determined by the end user.

**Conjugation:** Unconjugated

**Immunogen:** Synthetic peptide corresponding to RELA (pS536). The exact sequence is proprietary.

**Isotype:** IgG

**Form:** Liquid

**Purification:** Purified by affinity chromatography.

**Storage:** Aliquot and store at -20°C. Avoid repeated freeze/thaw cycles.

**UniProt Primary AC:** Q04206 ([UniProt](#), [ExPASy](#))

**Gene Symbol:** RELA

**GenelD:** [5970](#)

**NCBI Accession:** NP\_068810.3

**Molecular Weight:** Calculated MW: 60 kDa  
Observed MW: 65 kDa

**Buffer:** PBS, pH 7.3, containing 0.09% sodium azide, 50% glycerol.

**Concentration:** > 0.2 mg/ml

**Note:** THIS PRODUCT IS FOR RESEARCH USE ONLY. NOT FOR USE IN DIAGNOSTIC, THERAPEUTIC OR COSMETIC PROCEDURES. NOT FOR HUMAN OR ANIMAL CONSUMPTION.