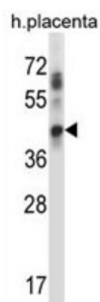


## Ubiquitin-Conjugating Enzyme E2 J1 (UBE2J1) Antibody

Catalogue No.: abx028012



The modification of proteins with ubiquitin is an important cellular mechanism for targeting abnormal or short-lived proteins for degradation. Ubiquitination involves at least three classes of enzymes: ubiquitin-activating enzymes, or E1s, ubiquitin-conjugating enzymes, or E2s, and ubiquitin-protein ligases, or E3s. This gene encodes a member of the E2 ubiquitin-conjugating enzyme family. This enzyme is located in the membrane of the endoplasmic reticulum (ER) and may contribute to quality control ER-associated degradation by the ubiquitin-proteasome system.

|                               |   |
|-------------------------------|---|
| <b>Target:</b>                | Ubiquitin-Conjugating Enzyme E2 J1 (UBE2J1)   |
| <b>Clonality:</b>             | Polyclonal  |
| <b>Reactivity:</b>            | Human   |
| <b>Tested Applications:</b>   | ELISA, WB   |
| <b>Host:</b>                  | Rabbit  |
| <b>Recommended dilutions:</b> | WB: 1/1000. Optimal dilutions/concentrations should be determined by the end user.                    |
| <b>Conjugation:</b>           | Unconjugated  |
| <b>Immunogen:</b>             | KLH-conjugated synthetic peptide between 1-30 amino acids from the N-terminal region of human UBE2J1. |
| <b>Isotype:</b>               | IgG   |
| <b>Form:</b>                  | Liquid  |
| <b>Purification:</b>          | Purified through a protein A column, followed by peptide affinity purification.                       |
| <b>Storage:</b>               | Aliquot and store at -20°C. Avoid repeated freeze/thaw cycles.  |
| <b>UniProt Primary AC:</b>    | Q9Y385 ( <a href="#">UniProt</a> , <a href="#">ExPASy</a> )   |

# Datasheet

Version: 4.0.0

Revision date: 27 Aug 2025



**Gene Symbol:** UBE2J1

**GeneID:** [51465](#)

**KEGG:** hsa:51465

**String:** [9606.ENSP00000451261](#)

**Molecular Weight:** Calculated MW: 35.2 kDa

**Buffer:** PBS containing 0.09% sodium azide.

**Specificity:** Predicted to react with Mouse UBE2J1.

**Note:** THIS PRODUCT IS FOR RESEARCH USE ONLY. NOT FOR USE IN DIAGNOSTIC, THERAPEUTIC OR COSMETIC PROCEDURES. NOT FOR HUMAN OR ANIMAL CONSUMPTION.

For Reference Only