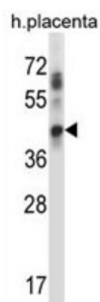


Ubiquitin-Conjugating Enzyme E2 J1 (UBE2J1) Antibody

Catalogue No.: abx028012



The modification of proteins with ubiquitin is an important cellular mechanism for targeting abnormal or short-lived proteins for degradation. Ubiquitination involves at least three classes of enzymes: ubiquitin-activating enzymes, or E1s, ubiquitin-conjugating enzymes, or E2s, and ubiquitin-protein ligases, or E3s. This gene encodes a member of the E2 ubiquitin-conjugating enzyme family. This enzyme is located in the membrane of the endoplasmic reticulum (ER) and may contribute to quality control ER-associated degradation by the ubiquitin-proteasome system.

Target:	Ubiquitin-Conjugating Enzyme E2 J1 (UBE2J1)
Clonality:	Polyclonal
Reactivity:	Human
Tested Applications:	ELISA, WB
Host:	Rabbit
Recommended dilutions:	WB: 1/1000. Optimal dilutions/concentrations should be determined by the end user.
Conjugation:	Unconjugated
Immunogen:	KLH-conjugated synthetic peptide between 1-30 amino acids from the N-terminal region of human UBE2J1.
Isotype:	IgG
Form:	Liquid
Purification:	Purified through a protein A column, followed by peptide affinity purification.
Storage:	Aliquot and store at -20°C. Avoid repeated freeze/thaw cycles.
UniProt Primary AC:	Q9Y385 (UniProt , ExPASy)

Datasheet

Version: 4.0.0
Revision date: 16 Mar 2025



Gene Symbol: UBE2J1

GeneID: [51465](#)

KEGG: hsa:51465

String: [9606.ENSP00000451261](#)

Molecular Weight: Calculated MW: 35.2 kDa

Buffer: PBS containing 0.09% sodium azide.

Specificity: Predicted to react with Mouse UBE2J1.

Note: THIS PRODUCT IS FOR RESEARCH USE ONLY. NOT FOR USE IN DIAGNOSTIC, THERAPEUTIC OR COSMETIC PROCEDURES. NOT FOR HUMAN OR ANIMAL CONSUMPTION.

For Reference Only