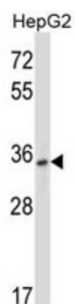


## P2Y Purinoceptor 10 (P2RY10) Antibody

Catalogue No.: abx028017



The protein encoded by this gene belongs to the family of G-protein coupled receptors, that are preferentially activated by adenosine and uridine nucleotides. Two alternatively spliced transcript variants encoding the same protein isoform have been found for this gene.

**Target:** P2Y Purinoceptor 10 (P2RY10)

**Clonality:** Polyclonal

**Reactivity:** Human

**Tested Applications:** ELISA, WB

**Host:** Rabbit

**Recommended dilutions:** WB: 1/1000. Optimal dilutions/concentrations should be determined by the end user.

**Conjugation:** Unconjugated

**Immunogen:** KLH-conjugated synthetic peptide between 125-153 amino acids from the Central region of human P2RY10.

**Isotype:** IgG

**Form:** Liquid

**Purification:** Purified through a protein A column, followed by peptide affinity purification.

**Storage:** Aliquot and store at -20°C. Avoid repeated freeze/thaw cycles.

**UniProt Primary AC:** O00398 ([UniProt](#), [ExPASy](#))

**Gene Symbol:** P2RY10

# Datasheet

Version: 4.0.0

Revision date: 14 Aug 2025



**KEGG:** hsa:27334

**String:** [9606.ENSP00000171757](#)

**Molecular Weight:** Calculated MW: 38.8 kDa

**Buffer:** PBS containing 0.09% sodium azide.

**Note:** THIS PRODUCT IS FOR RESEARCH USE ONLY. NOT FOR USE IN DIAGNOSTIC, THERAPEUTIC OR COSMETIC PROCEDURES. NOT FOR HUMAN OR ANIMAL CONSUMPTION.

For Reference Only