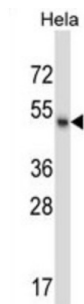


Male Specific Lethal 1 Homolog (MSL1) Antibody

Catalogue No.: abx028019



Component of histone acetyltransferase complex responsible for the majority of histone H4 acetylation at 'Lys-16' which is implicated in the formation of higher-order chromatin structure.

Target:	Male Specific Lethal 1 Homolog (MSL1)
Clonality:	Polyclonal
Reactivity:	Human
Tested Applications:	ELISA, WB
Host:	Rabbit
Recommended dilutions:	WB: 1/1000. Optimal dilutions/concentrations should be determined by the end user.
Conjugation:	Unconjugated
Immunogen:	KLH-conjugated synthetic peptide between 339-367 amino acids from the Central region of human MSL1.
Isotype:	IgG
Form:	Liquid
Purification:	Purified through a protein A column, followed by peptide affinity purification.
Storage:	Aliquot and store at -20°C. Avoid repeated freeze/thaw cycles.
UniProt Primary AC:	Q68DK7 (UniProt , ExPASy)
KEGG:	hsa:339287

Datasheet

Version: 4.0.0

Revision date: 20 Aug 2025



String: [9606.ENSPO0000462945](#)

Molecular Weight: Calculated MW: 67.1 kDa

Buffer: PBS containing 0.09% sodium azide.

Specificity: Predicted to react with Mouse MSL1.

Note: THIS PRODUCT IS FOR RESEARCH USE ONLY. NOT FOR USE IN DIAGNOSTIC, THERAPEUTIC OR COSMETIC PROCEDURES. NOT FOR HUMAN OR ANIMAL CONSUMPTION.

For Reference Only