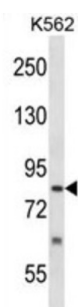


SUMO1/Sentrin Specific Peptidase 5 (SEN5) Antibody

Catalogue No.: abx028031



The reversible posttranslational modification of proteins by the addition of small ubiquitin-like SUMO proteins (see SUMO1; MIM 601912) is required for numerous biologic processes. SUMO-specific proteases, such as SENP5, are responsible for the initial processing of SUMO precursors to generate a C-terminal diglycine motif required for the conjugation reaction. They also have isopeptidase activity for the removal of SUMO from high molecular mass SUMO conjugates (Di Bacco et al., 2006 [PubMed 16738315]).

Target: SUMO1/Sentrin Specific Peptidase 5 (SEN5)

Clonality: Polyclonal

Reactivity: Human

Tested Applications: ELISA, WB

Host: Rabbit

Recommended dilutions: WB: 1/1000. Optimal dilutions/concentrations should be determined by the end user.

Conjugation: Unconjugated

Immunogen: KLH-conjugated synthetic peptide between 718-747 amino acids from the C-terminal region of human SENP5.

Isotype: IgG

Form: Liquid

Purification: Purified through a protein A column, followed by peptide affinity purification.

Storage: Aliquot and store at -20°C. Avoid repeated freeze/thaw cycles.

UniProt Primary AC: Q96HI0 ([UniProt](#), [ExPASy](#))

Datasheet

Version: 2.0.0

Revision date: 06 Mar 2025



KEGG: hsa:205564

String: [9606.ENSP00000327197](#)

Molecular Weight: Calculated MW: 86.7 kDa

Buffer: PBS containing 0.09% sodium azide.

Specificity: Predicted to react with Mouse and Monkey SENP5.

Note: THIS PRODUCT IS FOR RESEARCH USE ONLY. NOT FOR USE IN DIAGNOSTIC, THERAPEUTIC OR COSMETIC PROCEDURES. NOT FOR HUMAN OR ANIMAL CONSUMPTION.

For Reference Only