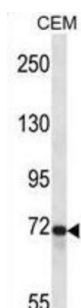
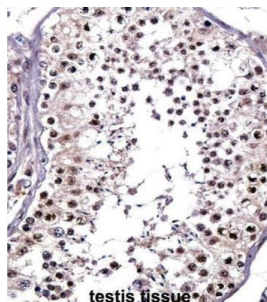


# Receptor-Type Tyrosine-Protein Phosphatase Epsilon (PTPRE) Antibody

Catalogue No.: abx028034



The protein encoded by this gene is a member of the protein tyrosine phosphatase (PTP) family. PTPs are known to be signaling molecules that regulate a variety of cellular processes including cell growth, differentiation, mitotic cycle, and oncogenic transformation. Two alternatively spliced transcript variants of this gene have been reported, one of which encodes a receptor-type PTP that possesses a short extracellular domain, a single transmembrane region, and two tandem intracytoplasmic catalytic domains; Another one encodes a PTP that contains a distinct hydrophilic N-terminus, and thus represents a nonreceptor-type isoform of this PTP. Studies of the similar gene in mice suggested the regulatory roles of this PTP in RAS related signal transduction pathways, cytokines induced SATA signaling, as well as the activation of voltage-gated K<sup>+</sup> channels. [provided by RefSeq].

**Target:** Receptor-Type Tyrosine-Protein Phosphatase Epsilon (PTPRE)

**Clonality:** Polyclonal

**Reactivity:** Human

**Tested Applications:** ELISA, WB, IHC

**Host:** Rabbit

**Recommended dilutions:** WB: 1/1000, IHC-P: 1/10 - 1/50. Not tested in IHC-F. Optimal dilutions/concentrations should be determined by the end user.

**Conjugation:** Unconjugated

# Datasheet

Version: 2.0.0  
Revision date: 23 Aug 2025



<b>Immunogen:</b>	KLH-conjugated synthetic peptide between 134-163 amino acids from the N-terminal region of human PTPRE.
<b>Isotype:</b>	IgG
<b>Form:</b>	Liquid
<b>Purification:</b>	Purified through a protein A column, followed by peptide affinity purification.
<b>Storage:</b>	Aliquot and store at -20°C. Avoid repeated freeze/thaw cycles.
<b>UniProt Primary AC:</b>	P23469 ( <a href="#">UniProt</a> , <a href="#">ExPASy</a> )
<b>Gene Symbol:</b>	PTPRE
<b>GeneID:</b>	<a href="#">5791</a>
<b>OMIM:</b>	<a href="#">600926</a>
<b>HGNC:</b>	9669
<b>KEGG:</b>	hsa:5791
<b>Ensembl:</b>	ENSG00000132334
<b>String:</b>	<a href="#">9606.ENSP00000254667</a>
<b>Molecular Weight:</b>	Calculated MW: 80.6 kDa
<b>Buffer:</b>	PBS containing 0.09% sodium azide.
<b>Specificity:</b>	Predicted to react with Mouse and Rat PTPRE.
<b>Note:</b>	THIS PRODUCT IS FOR RESEARCH USE ONLY. NOT FOR USE IN DIAGNOSTIC, THERAPEUTIC OR COSMETIC PROCEDURES. NOT FOR HUMAN OR ANIMAL CONSUMPTION.