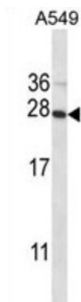


# DNA-Directed RNA Polymerases I, II, And III Subunit RPABC1 (POLR2E) Antibody

Catalogue No.: abx028042



This gene encodes the fifth largest subunit of RNA polymerase II, the polymerase responsible for synthesizing messenger RNA in eukaryotes. This subunit is shared by the other two DNA-directed RNA polymerases and is present in two-fold molar excess over the other polymerase subunits. An interaction between this subunit and a hepatitis virus transactivating protein has been demonstrated, suggesting that interaction between transcriptional activators and the polymerase can occur through this subunit. A pseudogene is located on chromosome 11.

<b>Target:</b>	DNA-Directed RNA Polymerases I, II, And III Subunit RPABC1 (POLR2E)
<b>Clonality:</b>	Polyclonal
<b>Reactivity:</b>	Human
<b>Tested Applications:</b>	ELISA, WB
<b>Host:</b>	Rabbit
<b>Recommended dilutions:</b>	WB: 1/1000. Optimal dilutions/concentrations should be determined by the end user.
<b>Conjugation:</b>	Unconjugated
<b>Immunogen:</b>	KLH-conjugated synthetic peptide between 30-59 amino acids from the N-terminal region of human POLR2E.
<b>Isotype:</b>	IgG
<b>Form:</b>	Liquid
<b>Purification:</b>	Purified through a protein A column, followed by peptide affinity purification.
<b>Storage:</b>	Aliquot and store at -20°C. Avoid repeated freeze/thaw cycles.
<b>UniProt Primary AC:</b>	P19388 ( <a href="#">UniProt</a> , <a href="#">ExPASy</a> )

# Datasheet

Version: 2.0.0

Revision date: 09 Jun 2025



**Gene Symbol:** POLR2E

**KEGG:** hsa:5434

**String:** [9606.ENSP00000478303](#)

**Molecular Weight:** Calculated MW: 24.6 kDa

**Buffer:** PBS containing 0.09% sodium azide.

**Specificity:** Predicted to react with Mouse and Rat POLR2E.

**Note:** THIS PRODUCT IS FOR RESEARCH USE ONLY. NOT FOR USE IN DIAGNOSTIC, THERAPEUTIC OR COSMETIC PROCEDURES. NOT FOR HUMAN OR ANIMAL CONSUMPTION.

For Reference Only