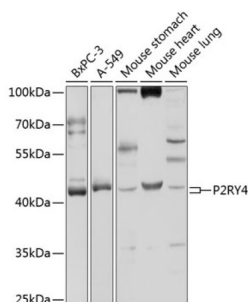


P2Y Purinoceptor 4 (P2RY4) Antibody

Catalogue No.: abx002206



Western blot analysis of extracts of various cell lines using P2RY4 Antibody (1/1000 dilution).

P2RY4 Antibody is a Rabbit Polyclonal antibody against P2RY4. The product of this gene belongs to the family of G-protein coupled receptors. This family has several receptor subtypes with different pharmacological selectivity, which overlaps in some cases, for various adenosine and uridine nucleotides. This receptor is responsive to uridine nucleotides, partially responsive to ATP, and not responsive to ADP.

Target: P2Y Purinoceptor 4 (P2RY4)

Clonality: Polyclonal

Reactivity: Human, Mouse, Rat

Tested Applications: WB

Host: Rabbit

Recommended dilutions: WB: 1/500 - 1/2000. Optimal dilutions/concentrations should be determined by the end user.

Conjugation: Unconjugated

Immunogen: Recombinant fusion protein corresponding to human P2RY4

Isotype: IgG

Form: Liquid

Purification: Purified by affinity chromatography.

Storage: Aliquot and store at -20°C. Avoid repeated freeze/thaw cycles.

UniProt Primary AC: P51582 ([UniProt](#), [ExPASy](#))

Gene Symbol: P2RY4

Datasheet

Version: 4.0.0

Revision date: 14 Jul 2025



GeneID: [5030](#)

NCBI Accession: NP_002556.1

KEGG: hsa:5030

String: [9606.ENSP00000363643](#)

Molecular Weight: Calculated MW: 40 kDa
Observed MW: 41 kDa

Buffer: PBS, pH 7.3, containing 0.02% sodium azide, 50% glycerol.

Concentration: 1 mg/ml

Note: THIS PRODUCT IS FOR RESEARCH USE ONLY. NOT FOR USE IN DIAGNOSTIC, THERAPEUTIC OR COSMETIC PROCEDURES. NOT FOR HUMAN OR ANIMAL CONSUMPTION.

For Reference Only