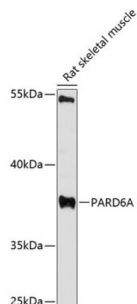


## Par-6 Family Cell Polarity Regulator Alpha (PARD6A) Antibody

Catalogue No.: abx002209



Western blot analysis of extracts of rat skeletal muscle using PARD6A Antibody (1/3000 dilution).

PARD6A Antibody is a Rabbit Polyclonal antibody against PARD6A. This gene is a member of the PAR6 family and encodes a protein with a PSD95/Disks-large/ZO1 (PDZ) domain and a semi-Cdc42/Rac interactive binding (CRIB) domain. This cell membrane protein is involved in asymmetrical cell division and cell polarization processes as a member of a multi-protein complex. The protein also has a role in the epithelial-to-mesenchymal transition (EMT) that characterizes the invasive phenotype associated with metastatic carcinomas. Alternate transcriptional splice variants, encoding different isoforms, have been characterized.

**Target:** Par-6 Family Cell Polarity Regulator Alpha (PARD6A)

**Clonality:** Polyclonal

**Reactivity:** Rat

**Tested Applications:** WB

**Host:** Rabbit

**Recommended dilutions:** WB: 1/500 - 1/2000. Optimal dilutions/concentrations should be determined by the end user.

**Conjugation:** Unconjugated

**Immunogen:** Recombinant fusion protein corresponding to human PARD6A

**Isotype:** IgG

**Form:** Liquid

**Purification:** Purified by affinity chromatography.

**Storage:** Aliquot and store at -20°C. Avoid repeated freeze/thaw cycles.

**UniProt Primary AC:** Q9NPB6 ([UniProt](#), [ExPASy](#))

# Datasheet

Version: 3.0.0

Revision date: 08 Oct 2025



**Gene Symbol:** PARD6A

**GeneID:** [50855](#)

**String:** [9606.ENSPP00000219255](#)

**Molecular Weight:** Calculated MW: 37 kDa  
Observed MW: 37 kDa

**Buffer:** PBS, pH 7.3, containing 0.01% thiomersal, 50% glycerol.

**Concentration:** 1 mg/ml

**Note:** THIS PRODUCT IS FOR RESEARCH USE ONLY. NOT FOR USE IN DIAGNOSTIC, THERAPEUTIC OR COSMETIC PROCEDURES. NOT FOR HUMAN OR ANIMAL CONSUMPTION.

For Reference Only