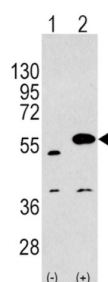
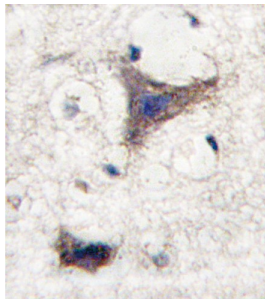


# Sprouty-Related, EVH1 Domain-Containing Protein 1 (SPRED1) Antibody

Catalogue No.: abx028096



SPRED1 is a tyrosine kinase substrate that inhibits growth-factor-mediated activation of MAP kinase.

**Target:** Sprouty-Related, EVH1 Domain-Containing Protein 1 (SPRED1)

**Clonality:** Polyclonal

**Reactivity:** Human

**Tested Applications:** ELISA, WB, IHC

**Host:** Rabbit

**Recommended dilutions:** WB: 1/1000, IHC-P: 1/10 - 1/50. Not tested in IHC-F. Optimal dilutions/concentrations should be determined by the end user.

**Conjugation:** Unconjugated

**Immunogen:** KLH-conjugated synthetic peptide between 302-331 amino acids from the C-terminal region of human SPRED1.

**Isotype:** IgG

**Form:** Liquid

# Datasheet

Version: 2.0.0

Revision date: 13 Sep 2025



<b>Purification:</b>	Purified through a protein A column, eluted with high and low pH buffers and neutralized immediately, followed by dialysis against PBS.
<b>Storage:</b>	Aliquot and store at -20°C. Avoid repeated freeze/thaw cycles.
<b>UniProt Primary AC:</b>	Q7Z699 ( <a href="#">UniProt</a> , <a href="#">ExPASy</a> )
<b>KEGG:</b>	hsa:161742
<b>String:</b>	<a href="#">9606.ENSP00000299084</a>
<b>Molecular Weight:</b>	Calculated MW: 50.5 kDa
<b>Buffer:</b>	PBS containing 0.09% sodium azide.
<b>Note:</b>	THIS PRODUCT IS FOR RESEARCH USE ONLY. NOT FOR USE IN DIAGNOSTIC, THERAPEUTIC OR COSMETIC PROCEDURES. NOT FOR HUMAN OR ANIMAL CONSUMPTION.

For Reference Only