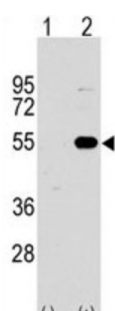


Sprouty-Related, EVH1 Domain-Containing Protein 1 (SPRED1) Antibody

Catalogue No.: abx028098



SPRED1 is a tyrosine kinase substrate that inhibits growth-factor-mediated activation of MAP kinase.

Target:	Sprouty-Related, EVH1 Domain-Containing Protein 1 (SPRED1)
Clonality:	Polyclonal
Reactivity:	Human
Tested Applications:	ELISA, WB, IHC
Host:	Rabbit
Recommended dilutions:	WB: 1/1000, IHC-P: 1/10 - 1/50. Not tested in IHC-F. Optimal dilutions/concentrations should be determined by the end user.
Conjugation:	Unconjugated
Immunogen:	KLH-conjugated synthetic peptide between 44-73 amino acids from the N-terminal region of human SPRED1.
Isotype:	IgG
Form:	Liquid

Datasheet

Version: 3.0.0
Revision date: 22 Aug 2025



Purification:	Purified through a protein A column, eluted with high and low pH buffers and neutralized immediately, followed by dialysis against PBS.
Storage:	Aliquot and store at -20°C. Avoid repeated freeze/thaw cycles.
UniProt Primary AC:	Q7Z699 (UniProt , ExPASy)
KEGG:	hsa:161742
String:	9606.ENSP00000299084
Molecular Weight:	Calculated MW: 50.5 kDa
Buffer:	PBS containing 0.09% sodium azide.
Specificity:	Predicted to react with Mouse SPRED1.
Note:	THIS PRODUCT IS FOR RESEARCH USE ONLY. NOT FOR USE IN DIAGNOSTIC, THERAPEUTIC OR COSMETIC PROCEDURES. NOT FOR HUMAN OR ANIMAL CONSUMPTION.

For Reference Only