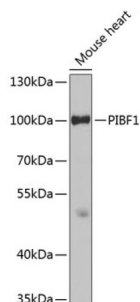
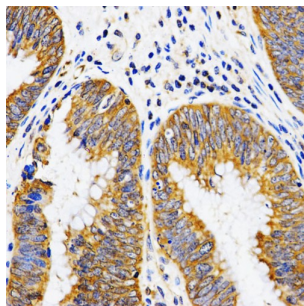


## Progesterone-Induced-Blocking Factor 1 (PIBF1) Antibody

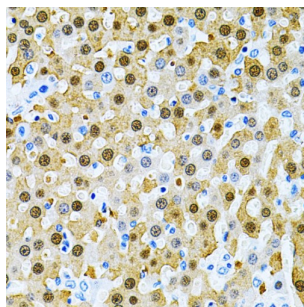
Catalogue No.: abx002214



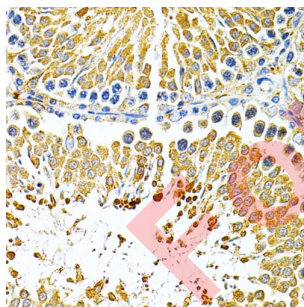
Western blot analysis of lysates from mouse heart, using PIBF1 Antibody at 1/400 dilution. Secondary antibody: HRP-conjugated Goat anti-Rabbit IgG (H+L) at 1/10000 dilution. Lysates/proteins: 25 µg per lane. Blocking buffer: 3% nonfat dry milk in TBST. Exposure time: 90s.



Immunohistochemistry analysis of paraffin-embedded Human rectal cancer using PIBF1 Antibody at dilution of 1/200 (40x lens). Microwave antigen retrieval performed in 0.01 M PBS Buffer (pH 7.2) prior to IHC staining.



Immunohistochemistry analysis of paraffin-embedded Rat liver using PIBF1 Antibody at dilution of 1/200 (40x lens). Microwave antigen retrieval performed in 0.01 M PBS Buffer (pH 7.2) prior to IHC staining.



Immunohistochemistry analysis of paraffin-embedded Rat testis using PIBF1 Antibody at dilution of 1/200 (40x lens). Microwave antigen retrieval performed in 0.01 M PBS Buffer (pH 7.2) prior to IHC staining.

PIBF1 Antibody is a Rabbit Polyclonal antibody against PIBF1. Progesterone-induced-blocking factor 1 is a protein that in humans is encoded by the PIBF1 gene. It has been shown to localize to the centrosome and has also been named CEP90. Mediator of progesterone that by acting on the phospholipase A2 enzyme interferes with arachidonic acid metabolism, induces a Th2 biased immune response, and by controlling NK activity exerts an anti-abortion effect.

**Target:** Progesterone-Induced-Blocking Factor 1 (PIBF1)

**Clonality:** Polyclonal

# Datasheet

Version: 5.0.0  
Revision date: 05 Mar 2025



<b>Reactivity:</b>	Human, Mouse, Rat
<b>Tested Applications:</b>	ELISA, WB, IHC
<b>Host:</b>	Rabbit
<b>Recommended dilutions:</b>	ELISA: 1 µg/ml, WB: 1/500 - 1/1000, IHC-P: 1/50 - 1/100. Not tested in IHC-F. Optimal dilutions/concentrations should be determined by the end user.
<b>Conjugation:</b>	Unconjugated
<b>Immunogen:</b>	A synthetic peptide corresponding to a sequence within amino acids 1-100 of human PIBF1.
<b>Isotype:</b>	IgG
<b>Form:</b>	Liquid
<b>Purification:</b>	Purified by affinity chromatography.
<b>Storage:</b>	Aliquot and store at -20°C. Avoid repeated freeze/thaw cycles.
<b>UniProt Primary AC:</b>	Q8WXW3 ( <a href="#">UniProt</a> , <a href="#">ExPASy</a> )
<b>Gene Symbol:</b>	PIBF1
<b>GeneID:</b>	<a href="#">10464</a>
<b>KEGG:</b>	hsa:10464
<b>String:</b>	<a href="#">9606.ENSP00000317144</a>
<b>Molecular Weight:</b>	Calculated MW: 90 kDa Observed MW: 100 kDa
<b>Buffer:</b>	PBS, pH 7.3, containing 0.01% thimerosal, 50% glycerol.
<b>Concentration:</b>	> 0.2 mg/ml
<b>Note:</b>	THIS PRODUCT IS FOR RESEARCH USE ONLY. NOT FOR USE IN DIAGNOSTIC, THERAPEUTIC OR COSMETIC PROCEDURES. NOT FOR HUMAN OR ANIMAL CONSUMPTION.