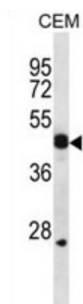


Wnt Inhibitory Factor 1 (WIF1) Antibody

Catalogue No.: abx028141



The protein encoded by this gene functions to inhibit WNT proteins, which are extracellular signaling molecules that play a role in embryonic development. This protein contains a WNT inhibitory factor (WIF) domain and five epidermal growth factor (EGF) like domains, and is thought to be involved in mesoderm segmentation. This gene functions as a tumor suppressor gene, and has been found to be epigenetically silenced in various cancers.

Target: Wnt Inhibitory Factor 1 (WIF1)

Clonality: Polyclonal

Reactivity: Human

Tested Applications: ELISA, WB

Host: Rabbit

Recommended dilutions: WB: 1/1000. Optimal dilutions/concentrations should be determined by the end user.

Conjugation: Unconjugated

Immunogen: KLH-conjugated synthetic peptide between 344-373 amino acids from the C-terminal region of human WIF1.

Isotype: IgG

Form: Liquid

Purification: Purified through a protein A column, followed by peptide affinity purification.

Storage: Aliquot and store at -20°C. Avoid repeated freeze/thaw cycles.

UniProt Primary AC: Q9Y5W5 ([UniProt](#), [ExPASy](#))

Gene Symbol: WIF1

Datasheet

Version: 3.0.0

Revision date: 22 Dec 2025



String: [9606.ENSF00000286574](#)

Molecular Weight: Calculated MW: 41.5 kDa

Buffer: PBS containing 0.09% sodium azide.

Note: THIS PRODUCT IS FOR RESEARCH USE ONLY. NOT FOR USE IN DIAGNOSTIC, THERAPEUTIC OR COSMETIC PROCEDURES. NOT FOR HUMAN OR ANIMAL CONSUMPTION.

For Reference Only