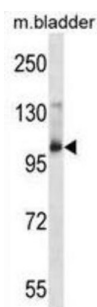
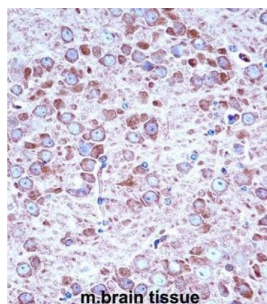


AP2 Associated Protein Kinase 1 (AAK1) Antibody

Catalogue No.: abx028171



Aak1 phosphorylates the AP2M1/mu2 subunit of the adaptor protein complex 2 (AP-2). May play a role in regulating aspects of clathrin-mediated endocytosis (By similarity).

Target: AP2 Associated Protein Kinase 1 (AAK1)

Clonality: Polyclonal

Reactivity: Mouse

Tested Applications: ELISA, WB, IHC

Host: Rabbit

Recommended dilutions: WB: 1/1000, IHC-P: 1/10 - 1/50. Not tested in IHC-F. Optimal dilutions/concentrations should be determined by the end user.

Conjugation: Unconjugated

Immunogen: KLH-conjugated synthetic peptide between 279-306 amino acids from the Central region of mouse Aak1.

Isotype: IgG

Form: Liquid

Datasheet

Version: 3.0.0

Revision date: 30 May 2025



Purification:	Purified through a protein A column, followed by peptide affinity purification.
Storage:	Aliquot and store at -20°C. Avoid repeated freeze/thaw cycles.
UniProt Primary AC:	Q3UJH0 (UniProt , ExPASy)
KEGG:	mmu:269774
String:	10090.ENSMUSP00000086948
Molecular Weight:	Calculated MW: 103 kDa
Buffer:	PBS containing 0.09% sodium azide.
Specificity:	Predicted to react with Human, Rat, Cow and Pig Aak1.
Note:	THIS PRODUCT IS FOR RESEARCH USE ONLY. NOT FOR USE IN DIAGNOSTIC, THERAPEUTIC OR COSMETIC PROCEDURES. NOT FOR HUMAN OR ANIMAL CONSUMPTION.

For Reference Only