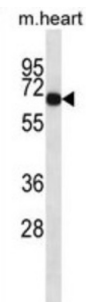


Uncharacterized AarF Domain-Containing Protein Kinase 1 (Adck1) Antibody

Catalogue No.: abx028173



The function of this protein is not yet clear. It is not known if it has protein kinase activity and what type of substrate it would phosphorylate (Ser, Thr or Tyr).

Target: Uncharacterized AarF Domain-Containing Protein Kinase 1 (Adck1)

Clonality: Polyclonal

Reactivity: Mouse

Tested Applications: ELISA, WB

Host: Rabbit

Recommended dilutions: WB: 1/1000. Optimal dilutions/concentrations should be determined by the end user.

Conjugation: Unconjugated

Immunogen: KLH-conjugated synthetic peptide between 448-475 amino acids from the C-terminal region of mouse Adck1.

Isotype: IgG

Form: Liquid

Purification: Purified through a protein A column, followed by peptide affinity purification.

Storage: Aliquot and store at -20°C. Avoid repeated freeze/thaw cycles.

UniProt Primary AC: Q9D0L4 ([UniProt](#), [ExPASy](#))

String: [10090.ENSMUSP00000127254](https://string-db.org/cgi/show.do?query=Q9D0L4&species=mouse)

Datasheet

Version: 4.0.0

Revision date: 23 Aug 2025



Molecular Weight: Calculated MW: 59.7 kDa

Buffer: PBS containing 0.09% sodium azide.

Note: THIS PRODUCT IS FOR RESEARCH USE ONLY. NOT FOR USE IN DIAGNOSTIC, THERAPEUTIC OR COSMETIC PROCEDURES. NOT FOR HUMAN OR ANIMAL CONSUMPTION.

For Reference Only