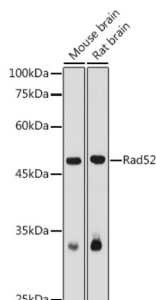


RAD52 Homolog, DNA Repair Protein (RAD52) Antibody

Catalogue No.: abx002218



Western blot analysis of various lysates using Rad52 Antibody at 1/1000 dilution. Secondary antibody: HRP-conjugated Goat anti-Rabbit IgG (H+L) at 1/10000 dilution. Lysates/proteins: 25 µg per lane. Blocking buffer: 3% nonfat dry milk in TBST. Exposure time: 180s.

RAD52 Antibody is a Rabbit Polyclonal antibody against RAD52. The protein encoded by this gene shares similarity with *Saccharomyces cerevisiae* Rad52, a protein important for DNA double-strand break repair and homologous recombination. This gene product was shown to bind single-stranded DNA ends, and mediate the DNA-DNA interaction necessary for the annealing of complementary DNA strands. It was also found to interact with DNA recombination protein RAD51, which suggested its role in RAD51 related DNA recombination and repair.

Target:	RAD52 Homolog, DNA Repair Protein (RAD52)
Clonality:	Polyclonal
Reactivity:	Human, Mouse, Rat
Tested Applications:	ELISA, WB
Host:	Rabbit
Recommended dilutions:	ELISA: 1 µg/ml, WB: 1/500 - 1/1000. Optimal dilutions/concentrations should be determined by the end user.
Conjugation:	Unconjugated
Immunogen:	Recombinant fusion protein containing a sequence corresponding to amino acids 125-418 of human Rad52.
Isotype:	IgG
Form:	Liquid
Purification:	Purified by affinity chromatography.
Storage:	Aliquot and store at -20°C. Avoid repeated freeze/thaw cycles.
UniProt Primary AC:	P43351 (UniProt , ExPASy)

Datasheet

Version: 4.0.0

Revision date: 21 Aug 2025



Gene Symbol: RAD52

GeneID: [5893](#)

NCBI Accession: NP_602296.2

KEGG: hsa:5893

String: [9606.ENSP00000351284](#)

Molecular Weight: Calculated MW: 46 kDa
Observed MW: 50 kDa

Buffer: PBS, pH 7.3, containing 0.02% sodium azide, 50% glycerol.

Concentration: > 0.2 mg/ml

Note: THIS PRODUCT IS FOR RESEARCH USE ONLY. NOT FOR USE IN DIAGNOSTIC, THERAPEUTIC OR COSMETIC PROCEDURES. NOT FOR HUMAN OR ANIMAL CONSUMPTION.

For Reference Only