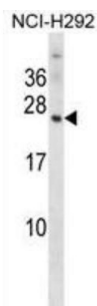


## Olfactory Marker Protein (OMP) Antibody

Catalogue No.: abx028214



Olfactory marker protein is uniquely associated with the mature olfactory receptor neurons in many vertebrate species from fish to man. The OMP gene structure and protein sequence are highly conserved between mouse, rat and human. Results of the mouse knockout studies show that OMP-null mice are compromised in their ability to respond to odor stimuli, and that OMP represents a novel modulatory component of the odor detection/signal transduction cascade.

**Target:** Olfactory Marker Protein (OMP)

**Clonality:** Polyclonal

**Reactivity:** Human

**Tested Applications:** ELISA, WB

**Host:** Rabbit

**Recommended dilutions:** WB: 1/1000. Optimal dilutions/concentrations should be determined by the end user.

**Conjugation:** Unconjugated

**Immunogen:** KLH-conjugated synthetic peptide between 13-41 amino acids from the N-terminal region of human OMP.

**Isotype:** IgG

**Form:** Liquid

**Purification:** Purified through a protein A column, followed by peptide affinity purification.

**Storage:** Aliquot and store at -20°C. Avoid repeated freeze/thaw cycles.

**UniProt Primary AC:** P47874 ([UniProt](#), [ExPASy](#))

**KEGG:** hsa:4975

# Datasheet

Version: 2.0.0

Revision date: 22 Apr 2025



**String:** [9606.ENSF00000436376](#)

**Molecular Weight:** Calculated MW: 18.9 kDa

**Buffer:** PBS containing 0.09% sodium azide.

**Note:** THIS PRODUCT IS FOR RESEARCH USE ONLY. NOT FOR USE IN DIAGNOSTIC, THERAPEUTIC OR COSMETIC PROCEDURES. NOT FOR HUMAN OR ANIMAL CONSUMPTION.

For Reference Only