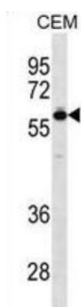
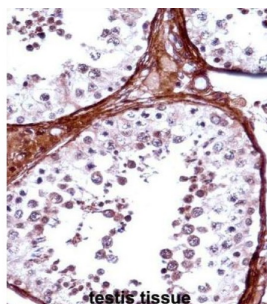


T-Box Protein 5 (TBX5) Antibody

Catalogue No.: abx028228



This gene is a member of a phylogenetically conserved family of genes that share a common DNA-binding domain, the T-box. T-box genes encode transcription factors involved in the regulation of developmental processes. This gene is closely linked to related family member T-box 3 (ulnar mammary syndrome) on human chromosome 12. The encoded protein may play a role in heart development and specification of limb identity. Mutations in this gene have been associated with Holt-Oram syndrome, a developmental disorder affecting the heart and upper limbs. Several transcript variants encoding different isoforms have been described for this gene.

Target: T-Box Protein 5 (TBX5)

Clonality: Polyclonal

Reactivity: Human

Tested Applications: ELISA, WB, IHC

Host: Rabbit

Recommended dilutions: WB: 1/2000, IHC-P: 1/10 - 1/50. Not tested in IHC-F. Optimal dilutions/concentrations should be determined by the end user.

Conjugation: Unconjugated

Immunogen: KLH-conjugated synthetic peptide between 1-30 amino acids from the N-terminal region of human TBX5.

Isotype: IgG

Datasheet

Version: 4.0.0

Revision date: 12 Sep 2025



Form:	Liquid
Purification:	Purified through a protein A column, followed by peptide affinity purification.
Storage:	Aliquot and store at -20°C. Avoid repeated freeze/thaw cycles.
UniProt Primary AC:	Q99593 (UniProt , ExPASy)
Gene Symbol:	TBX5
KEGG:	hsa:6910
String:	9606.ENSP00000309913
Molecular Weight:	Calculated MW: 57.7 kDa
Buffer:	PBS containing 0.09% sodium azide.
Note:	THIS PRODUCT IS FOR RESEARCH USE ONLY. NOT FOR USE IN DIAGNOSTIC, THERAPEUTIC OR COSMETIC PROCEDURES. NOT FOR HUMAN OR ANIMAL CONSUMPTION.

For Reference Only