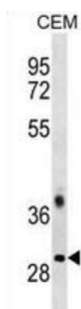
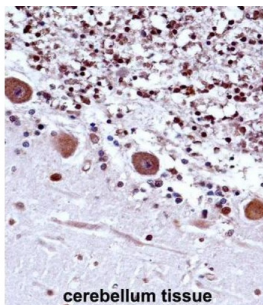


## Transformer-2 Protein Homolog Beta (TRA2B) Antibody

Catalogue No.: abx028229



TRA2B is a sequence-specific RNA-binding protein which participates in the control of pre-mRNA splicing.

<b>Target:</b>	Transformer-2 Protein Homolog Beta (TRA2B)
<b>Clonality:</b>	Polyclonal
<b>Reactivity:</b>	Human
<b>Tested Applications:</b>	ELISA, WB, IHC
<b>Host:</b>	Rabbit
<b>Recommended dilutions:</b>	WB: 1/1000, IHC-P: 1/10 - 1/50. Not tested in IHC-F. Optimal dilutions/concentrations should be determined by the end user.
<b>Conjugation:</b>	Unconjugated
<b>Immunogen:</b>	KLH-conjugated synthetic peptide between 208-237 amino acids from the Central region of human TRA2B.
<b>Isotype:</b>	IgG
<b>Form:</b>	Liquid
<b>Purification:</b>	Purified through a protein A column, followed by peptide affinity purification.

# Datasheet

Version: 2.0.0

Revision date: 16 Sep 2025



**Storage:** Aliquot and store at -20°C. Avoid repeated freeze/thaw cycles.

**UniProt Primary AC:** P62995 ([UniProt](#), [ExPASy](#))

**KEGG:** hsa:6434

**String:** [9606.ENSP00000416959](#)

**Molecular Weight:** Calculated MW: 33.7 kDa

**Buffer:** PBS containing 0.09% sodium azide.

**Specificity:** Predicted to react with Mouse, Rat and Cow TRA2B.

**Note:** THIS PRODUCT IS FOR RESEARCH USE ONLY. NOT FOR USE IN DIAGNOSTIC, THERAPEUTIC OR COSMETIC PROCEDURES. NOT FOR HUMAN OR ANIMAL CONSUMPTION.

For Reference Only