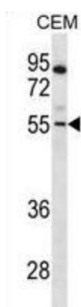
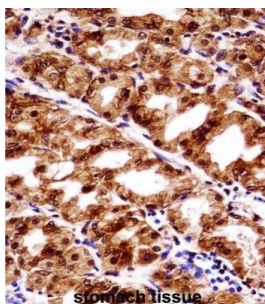


Paired Box Protein Pax-7 (PAX7) Antibody

Catalogue No.: abx028232



This gene is a member of the paired box (PAX) family of transcription factors. Members of this gene family typically contain a paired box domain, an octapeptide, and a paired-type homeodomain. These genes play critical roles during fetal development and cancer growth. The specific function of the paired box 7 gene is unknown but speculated to involve tumor suppression since fusion of this gene with a forkhead domain family member has been associated with alveolar rhabdomyosarcoma. Three transcript variants encoding different isoforms have been found for this gene.

Target: Paired Box Protein Pax-7 (PAX7)

Clonality: Polyclonal

Reactivity: Human

Tested Applications: ELISA, WB, IHC

Host: Rabbit

Recommended dilutions: WB: 1/1000, IHC-P: 1/10 - 1/50. Not tested in IHC-F. Optimal dilutions/concentrations should be determined by the end user.

Conjugation: Unconjugated

Immunogen: KLH-conjugated synthetic peptide between 181-210 amino acids from the Central region of human PAX7.

Isotype: IgG

Datasheet

Version: 1.0.0
Revision date: 11 Jun 2025



Form:	Liquid
Purification:	Purified through a protein A column, followed by peptide affinity purification.
Storage:	Aliquot and store at -20°C. Avoid repeated freeze/thaw cycles.
UniProt Primary AC:	P23759 (UniProt , ExPASy)
Gene Symbol:	PAX7
GeneID:	5081
OMIM:	167410
HGNC:	8621
KEGG:	hsa:5081
Ensembl:	ENSG00000009709
String:	9606.ENSP00000364524
Molecular Weight:	Calculated MW: 55.1 kDa
Buffer:	PBS containing 0.09% sodium azide.
Specificity:	Predicted to react with Mouse PAX7.
Note:	THIS PRODUCT IS FOR RESEARCH USE ONLY. NOT FOR USE IN DIAGNOSTIC, THERAPEUTIC OR COSMETIC PROCEDURES. NOT FOR HUMAN OR ANIMAL CONSUMPTION.