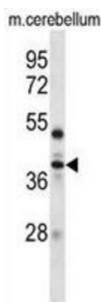


## Proto-Oncogene Serine/threonine-Protein Kinase Mos (Mos) Antibody

Catalogue No.: abx028233



MOS is a proto oncogene (c-Mos) encoded protein serine/threonine kinase. MOS is a monomeric protein that indirectly activates MAP kinase (Erk1/2) by directly phosphorylating MAP kinase kinase (Mck, MAPKK, MKK). MOS is known as a cytosolic factor (CSF) and is also thought to arrest unfertilized amphibian and mammalian cells during M phase, thus regulating oocyte maturation. MOS is destroyed before fertilisation, after exit from meiosis II, making it a good marker for studies of eggs during oogenesis and maturation.

**Target:** Proto-Oncogene Serine/threonine-Protein Kinase Mos (Mos)

**Clonality:** Polyclonal

**Reactivity:** Mouse

**Tested Applications:** ELISA, WB

**Host:** Rabbit

**Recommended dilutions:** WB: 1/1000. Optimal dilutions/concentrations should be determined by the end user.

**Conjugation:** Unconjugated

**Immunogen:** KLH-conjugated synthetic peptide between 301-329 amino acids from the C-terminal region of mouse Mos.

**Isotype:** IgG

**Form:** Liquid

**Purification:** Purified through a protein A column, followed by peptide affinity purification.

**Storage:** Aliquot and store at -20°C. Avoid repeated freeze/thaw cycles.

**UniProt Primary AC:** P00536 ([UniProt](#), [ExPASy](#))

# Datasheet

Version: 6.0.0

Revision date: 29 Sep 2025



**KEGG:** mmu:17451

**String:** [10090.ENSMUSP00000100789](#)

**Molecular Weight:** Calculated MW: 37.9 kDa

**Buffer:** PBS containing 0.09% sodium azide.

**Specificity:** Predicted to react with Rat Mos.

**Note:** THIS PRODUCT IS FOR RESEARCH USE ONLY. NOT FOR USE IN DIAGNOSTIC, THERAPEUTIC OR COSMETIC PROCEDURES. NOT FOR HUMAN OR ANIMAL CONSUMPTION.

For Reference Only