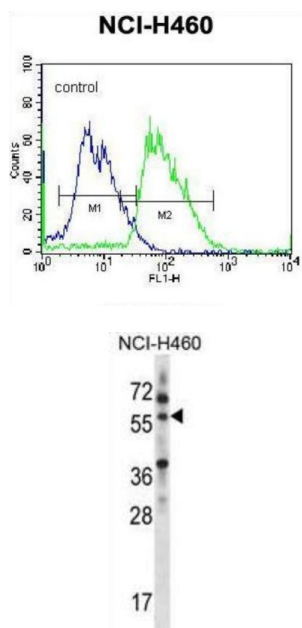


Multiple Inositol Polyphosphate Phosphatase 1 (MINPP1) Antibody

Catalogue No.: abx028250



This gene encodes multiple inositol polyphosphate phosphatase; an enzyme that removes 3-phosphate from inositol phosphate substrates. It is the only enzyme known to hydrolyze inositol pentakisphosphate and inositol hexakisphosphate. This enzyme also converts 2, 3 bisphosphoglycerate (2, 3-BPG) to 2-phosphoglycerate; an activity formerly thought to be exclusive to 2, 3-BPG synthase/2-phosphatase (BPGM) in the Rapoport-Luebering shunt of the glycolytic pathway.

Target: Multiple Inositol Polyphosphate Phosphatase 1 (MINPP1)

Clonality: Polyclonal

Reactivity: Human

Tested Applications: ELISA, WB, FCM

Host: Rabbit

Recommended dilutions: WB: 1/1000, FCM: 1/10 - 1/50. Optimal dilutions/concentrations should be determined by the end user.

Conjugation: Unconjugated

Immunogen: KLH-conjugated synthetic peptide between 370-398 amino acids from the C-terminal region of human MINPP1.

Isotype: IgG

Datasheet

Version: 3.0.0

Revision date: 08 Sep 2025



| | |
|----------------------------|--|
| Form: | Liquid |
| Purification: | Purified through a protein A column, followed by peptide affinity purification. |
| Storage: | Aliquot and store at -20°C. Avoid repeated freeze/thaw cycles. |
| UniProt Primary AC: | Q9UNW1 (UniProt , ExPASy) |
| Gene Symbol: | MINPP1 |
| String: | 9606.ENSP00000361064 |
| Molecular Weight: | Calculated MW: 55.1 kDa |
| Buffer: | PBS containing 0.09% sodium azide. |
| Note: | THIS PRODUCT IS FOR RESEARCH USE ONLY. NOT FOR USE IN DIAGNOSTIC, THERAPEUTIC OR COSMETIC PROCEDURES. NOT FOR HUMAN OR ANIMAL CONSUMPTION. |

For Reference Only