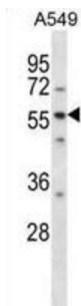
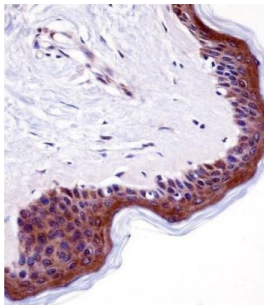


Protein LSM14 Homolog A (LSM14A) Antibody

Catalogue No.: abx028259



Sm-like proteins were identified in a variety of organisms based on sequence homology with the Sm protein family (see SNRPD2; 601061). Sm-like proteins contain the Sm sequence motif, which consists of 2 regions separated by a linker of variable length that folds as a loop. The Sm-like proteins are thought to form a stable heteromer present in tri-snRNP particles, which are important for pre-mRNA splicing.

Target: Protein LSM14 Homolog A (LSM14A)

Clonality: Polyclonal

Reactivity: Human

Tested Applications: ELISA, WB, IHC

Host: Rabbit

Recommended dilutions: WB: 1/1000, IHC-P: 1/10 - 1/50. Not tested in IHC-F. Optimal dilutions/concentrations should be determined by the end user.

Conjugation: Unconjugated

Immunogen: KLH-conjugated synthetic peptide between 311-340 amino acids from the C-terminal region of human LSM14A.

Isotype: IgG

Datasheet

Version: 3.0.0
Revision date: 04 May 2025



Form:	Liquid
Purification:	Purified through a protein A column, followed by peptide affinity purification.
Storage:	Aliquot and store at -20°C. Avoid repeated freeze/thaw cycles.
UniProt Primary AC:	Q8ND56 (UniProt , ExPASy)
Gene Symbol:	LSM14A
GeneID:	26065
OMIM:	610677
HGNC:	24489
KEGG:	hsa:26065
Ensembl:	ENSG00000257103
String:	9606.ENSP00000446271
Molecular Weight:	Calculated MW: 50.5 kDa
Buffer:	PBS containing 0.09% sodium azide.
Specificity:	Predicted to react with Mouse and Cow LSM14A.
Note:	THIS PRODUCT IS FOR RESEARCH USE ONLY. NOT FOR USE IN DIAGNOSTIC, THERAPEUTIC OR COSMETIC PROCEDURES. NOT FOR HUMAN OR ANIMAL CONSUMPTION.