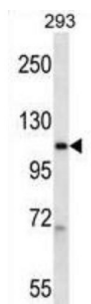


DNA-Directed RNA Polymerase II Subunit RPB2 (POLR2B) Antibody

Catalogue No.: abx028262



DNA-Directed RNA Polymerase II Subunit RPB2 (POLR2B) Antibody is a rabbit polyclonal antibody against DNA-Directed RNA Polymerase II Subunit RPB2 (POLR2B). This gene encodes the second largest subunit of RNA polymerase II (Pol II), a DNA-dependent RNA polymerase that catalyzes the transcription of DNA into precursors of mRNA, snRNA and microRNA. This subunit and the largest subunit form opposite sides of the center cleft of Pol II. Deletion of the flap loop region of this subunit results in a decrease in the rate of transcriptional elongation. Alternative splicing results in multiple transcript variants. [provided by RefSeq, Dec 2014].

| | |
|-------------------------------|---|
| Target: | DNA-Directed RNA Polymerase II Subunit RPB2 (POLR2B) |
| Clonality: | Polyclonal |
| Reactivity: | Human |
| Tested Applications: | ELISA, WB |
| Host: | Rabbit |
| Recommended dilutions: | WB: 1/1000. Optimal dilutions/concentrations should be determined by the end user. |
| Conjugation: | Unconjugated |
| Immunogen: | KLH-conjugated synthetic peptide between 797-826 amino acids from the Central region of human POLR2B. |
| Isotype: | IgG |
| Form: | Liquid |
| Purification: | Purified through a protein A column, followed by peptide affinity purification. |
| Storage: | Aliquot and store at -20°C. Avoid repeated freeze/thaw cycles. |
| UniProt Primary AC: | P30876 (UniProt , ExPASy) |

Datasheet

Version: 3.0.0
Revision date: 01 Oct 2025



Gene Symbol: POLR2B

GeneID: [5431](#)

OMIM: [180661](#)

HGNC: 9188

KEGG: hsa:5431

Ensembl: ENSG00000047315

String: [9606.ENSP00000370625](#)

Molecular Weight: Calculated MW: 134 kDa

Buffer: PBS containing 0.09% sodium azide.

Specificity: Predicted to react with Mouse POLR2B.

Note: THIS PRODUCT IS FOR RESEARCH USE ONLY. NOT FOR USE IN DIAGNOSTIC, THERAPEUTIC OR COSMETIC PROCEDURES. NOT FOR HUMAN OR ANIMAL CONSUMPTION.

For Reference Only