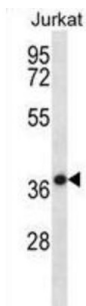
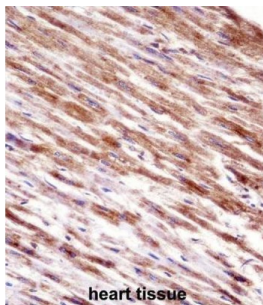


## Heat Shock Protein-Binding Protein 1 (HSPBP1) Antibody

Catalogue No.: abx028295



HSPBP1 inhibits HSPA1A chaperone activity by changing the conformation of the ATP-binding domain of HSPA1A and interfering with ATP binding. Interferes with ubiquitination mediated by STUB1 and inhibits chaperone-assisted degradation of immature CFTR.

**Target:** Heat Shock Protein-Binding Protein 1 (HSPBP1)

**Clonality:** Polyclonal

**Reactivity:** Human

**Tested Applications:** ELISA, WB, IHC

**Host:** Rabbit

**Recommended dilutions:** WB: 1/1000, IHC-P: 1/10 - 1/50. Not tested in IHC-F. Optimal dilutions/concentrations should be determined by the end user.

**Conjugation:** Unconjugated

**Immunogen:** KLH-conjugated synthetic peptide between 69-97 amino acids from the N-terminal region of human HSPBP1.

**Isotype:** IgG

**Form:** Liquid

# Datasheet

Version: 4.0.0  
Revision date: 13 Oct 2025



<b>Purification:</b>	Purified through a protein A column, followed by peptide affinity purification.
<b>Storage:</b>	Aliquot and store at -20°C. Avoid repeated freeze/thaw cycles.
<b>UniProt Primary AC:</b>	Q9NZL4 ( <a href="#">UniProt</a> , <a href="#">ExPASy</a> )
<b>Gene Symbol:</b>	HSPBP1
<b>String:</b>	<a href="#">9606.ENSP00000255631</a>
<b>Molecular Weight:</b>	Calculated MW: 39.3 kDa
<b>Buffer:</b>	PBS containing 0.09% sodium azide.
<b>Specificity:</b>	Predicted to react with Mouse, Rat and Monkey HSPBP1.
<b>Note:</b>	THIS PRODUCT IS FOR RESEARCH USE ONLY. NOT FOR USE IN DIAGNOSTIC, THERAPEUTIC OR COSMETIC PROCEDURES. NOT FOR HUMAN OR ANIMAL CONSUMPTION.

For Reference Only