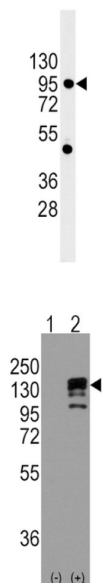
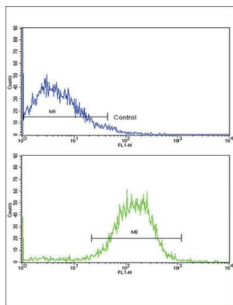


Epithelial Cadherin (CDHE) Antibody

Catalogue No.: abx028300



CDH1 is a classical cadherin from the cadherin superfamily. This protein is a calcium dependent cell-cell adhesion glycoprotein comprised of five extracellular cadherin repeats, a transmembrane region and a highly conserved cytoplasmic tail. Mutations are correlated with gastric, breast, colorectal, thyroid and ovarian cancer. Loss of function is thought to contribute to progression in cancer by increasing proliferation, invasion, and/or metastasis. The ectodomain of this protein mediates bacterial adhesion to mammalian cells and the cytoplasmic domain is required for internalization.

Target: Epithelial Cadherin (CDHE)

Clonality: Polyclonal

Reactivity: Human

Tested Applications: ELISA, WB, FCM

Host: Rabbit

Datasheet

Version: 2.0.0
Revision date: 28 Jun 2025



Recommended dilutions: WB: 1/2000, FCM: 1/10 - 1/50. Optimal dilutions/concentrations should be determined by the end user.

Conjugation: Unconjugated

Immunogen: KLH-conjugated synthetic peptide between 160-189 amino acids from the N-terminal region of human E Cadherin (CDH1).

Isotype: IgG

Form: Liquid

Purification: Purified through a protein A column, eluted with high and low pH buffers and neutralized immediately, followed by dialysis against PBS.

Storage: Aliquot and store at -20°C. Avoid repeated freeze/thaw cycles.

UniProt Primary AC: P12830 ([UniProt](#), [ExPASy](#))

KEGG: hsa:999

String: [9606.ENSP00000261769](#)

Molecular Weight: Calculated MW: 97.5 kDa

Buffer: PBS containing 0.09% sodium azide.

Note: THIS PRODUCT IS FOR RESEARCH USE ONLY. NOT FOR USE IN DIAGNOSTIC, THERAPEUTIC OR COSMETIC PROCEDURES. NOT FOR HUMAN OR ANIMAL CONSUMPTION.