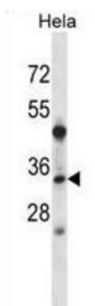


Linker For Activation of T-Cells Family, Member 2 (LAT2) Antibody

Catalogue No.: abx028318



This gene is one of the contiguous genes at 7q11.23 commonly deleted in Williams syndrome, a multisystem developmental disorder. This gene consists of at least 14 exons, and its alternative splicing generates 3 transcript variants, all encoding the same protein.

| | |
|-------------------------------|---|
| Target: | Linker For Activation of T-Cells Family, Member 2 (LAT2) |
| Clonality: | Polyclonal |
| Reactivity: | Human |
| Tested Applications: | ELISA, WB |
| Host: | Rabbit |
| Recommended dilutions: | WB: 1/1000. Optimal dilutions/concentrations should be determined by the end user. |
| Conjugation: | Unconjugated |
| Immunogen: | KLH-conjugated synthetic peptide between 107-135 amino acids from the Central region of human LAT2. |
| Isotype: | IgG |
| Form: | Liquid |
| Purification: | Purified through a protein A column, followed by peptide affinity purification. |
| Storage: | Aliquot and store at -20°C. Avoid repeated freeze/thaw cycles. |
| UniProt Primary AC: | Q9GZY6 (UniProt , ExPASy) |
| Gene Symbol: | LAT2 |

Datasheet

Version: 2.0.0

Revision date: 20 Jun 2025



String: [9606.ENSF00000420494](#)

Molecular Weight: Calculated MW: 26.6 kDa

Buffer: PBS containing 0.09% sodium azide.

Note: THIS PRODUCT IS FOR RESEARCH USE ONLY. NOT FOR USE IN DIAGNOSTIC, THERAPEUTIC OR COSMETIC PROCEDURES. NOT FOR HUMAN OR ANIMAL CONSUMPTION.

For Reference Only