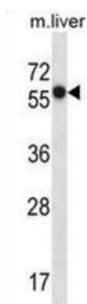


## Solute Carrier Family 45 Member 3 (SLC45A3) Antibody

Catalogue No.: abx028321



Belongs to the glycoside-pentoside-hexuronide (GPH) cation symporter transporter (TC 2.A.2) family.

**Target:** Solute Carrier Family 45 Member 3 (SLC45A3)

**Clonality:** Polyclonal

**Reactivity:** Mouse

**Tested Applications:** ELISA, WB

**Host:** Rabbit

**Recommended dilutions:** WB: 1/1000. Optimal dilutions/concentrations should be determined by the end user.

**Conjugation:** Unconjugated

**Immunogen:** KLH-conjugated synthetic peptide between 290-319 amino acids from the Central region of human SLC45A3.

**Isotype:** IgG

**Form:** Liquid

**Purification:** Purified through a protein A column, followed by peptide affinity purification.

**Storage:** Aliquot and store at -20°C. Avoid repeated freeze/thaw cycles.

**UniProt Primary AC:** Q96JT2 ([UniProt](#), [ExPASy](#))

**Gene Symbol:** SLC45A3

**KEGG:** hsa:85414

# Datasheet

Version: 2.0.0

Revision date: 11 Sep 2025



**String:** [9606.ENSF00000356113](#)

**Molecular Weight:** Calculated MW: 59.3 kDa

**Buffer:** PBS containing 0.09% sodium azide.

**Note:** THIS PRODUCT IS FOR RESEARCH USE ONLY. NOT FOR USE IN DIAGNOSTIC, THERAPEUTIC OR COSMETIC PROCEDURES. NOT FOR HUMAN OR ANIMAL CONSUMPTION.

For Reference Only