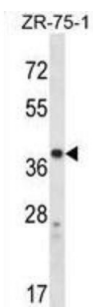
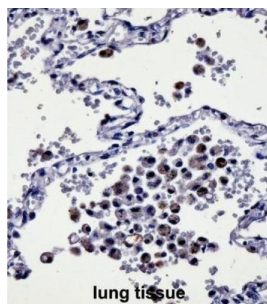


Cysteinyl Leukotriene Receptor 1 (CYSLTR1) Antibody

Catalogue No.: abx028326



The cysteinyl leukotrienes LTC₄, LTD₄, and LTE₄ are important mediators of human bronchial asthma. Pharmacologic studies have determined that cysteinyl leukotrienes activate at least 2 receptors, the protein encoded by this gene and CYSLTR2. This encoded receptor is a member of the superfamily of G protein-coupled receptors. Activation of this receptor by LTD₄ results in contraction and proliferation of smooth muscle, oedema, eosinophil migration and damage to the mucus layer in the lung.

Target: Cysteinyl Leukotriene Receptor 1 (CYSLTR1)

Clonality: Polyclonal

Reactivity: Human

Tested Applications: ELISA, WB, IHC

Host: Rabbit

Recommended dilutions: WB: 1/1000, IHC-P: 1/10 - 1/50. Not tested in IHC-F. Optimal dilutions/concentrations should be determined by the end user.

Conjugation: Unconjugated

Immunogen: KLH-conjugated synthetic peptide between 144-172 amino acids from the Central region of human CYSLTR1.

Isotype: IgG

Datasheet

Version: 3.0.0
Revision date: 25 Jun 2025



Form:	Liquid
Purification:	Purified through a protein A column, followed by peptide affinity purification.
Storage:	Aliquot and store at -20°C. Avoid repeated freeze/thaw cycles.
UniProt Primary AC:	Q9Y271 (UniProt , ExPASy)
Gene Symbol:	CYSLTR1
String:	9606.ENSP00000478492
Molecular Weight:	Calculated MW: 38.5 kDa
Buffer:	PBS containing 0.09% sodium azide.
Note:	THIS PRODUCT IS FOR RESEARCH USE ONLY. NOT FOR USE IN DIAGNOSTIC, THERAPEUTIC OR COSMETIC PROCEDURES. NOT FOR HUMAN OR ANIMAL CONSUMPTION.

For Reference Only