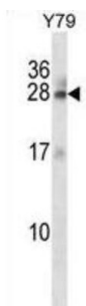


RAB3A, Member RAS Oncogene Family (RAB3A) Antibody

Catalogue No.: abx028328



RAB3A is involved in exocytosis by regulating a late step in synaptic vesicle fusion. Could play a role in neurotransmitter release by regulating membrane flow in the nerve terminal.

Target:	RAB3A, Member RAS Oncogene Family (RAB3A)
Clonality:	Polyclonal
Reactivity:	Human
Tested Applications:	ELISA, WB
Host:	Rabbit
Recommended dilutions:	WB: 1/1000. Optimal dilutions/concentrations should be determined by the end user.
Conjugation:	Unconjugated
Immunogen:	KLH-conjugated synthetic peptide between 1-30 amino acids from the N-terminal region of human RAB3A.
Isotype:	IgG
Form:	Liquid
Purification:	Purified through a protein A column, followed by peptide affinity purification.
Storage:	Aliquot and store at -20°C. Avoid repeated freeze/thaw cycles.
UniProt Primary AC:	P20336 (UniProt , ExPASy)
Gene Symbol:	RAB3A

Datasheet

Version: 2.0.0

Revision date: 20 Aug 2025



KEGG: hsa:5864

String: [9606.ENSP0000022256](#)

Molecular Weight: Calculated MW: 25 kDa

Buffer: PBS containing 0.09% sodium azide.

Specificity: Predicted to react with Mouse, Rat, Pig and Monkey RAB3A.

Note: THIS PRODUCT IS FOR RESEARCH USE ONLY. NOT FOR USE IN DIAGNOSTIC, THERAPEUTIC OR COSMETIC PROCEDURES. NOT FOR HUMAN OR ANIMAL CONSUMPTION.

For Reference Only