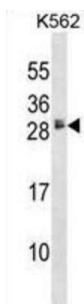


## Proheparin-Binding EGF-Like Growth Factor (HBEGF) Antibody

Catalogue No.: abx028334



HBEGF may be involved in macrophage-mediated cellular proliferation. It is mitogenic for fibroblasts and smooth muscle but not endothelial cells. It is able to bind EGF receptors with higher affinity than EGF itself and is a far more potent mitogen for smooth muscle cells than EGF. Also acts as a diphtheria toxin receptor.

**Target:** Proheparin-Binding EGF-Like Growth Factor (HBEGF)

**Clonality:** Polyclonal

**Reactivity:** Human

**Tested Applications:** ELISA, WB

**Host:** Rabbit

**Recommended dilutions:** WB: 1/1000. Optimal dilutions/concentrations should be determined by the end user.

**Conjugation:** Unconjugated

**Immunogen:** KLH-conjugated synthetic peptide between 68-96 amino acids from the Central region of human HBEGF.

**Isotype:** IgG

**Form:** Liquid

**Purification:** Purified through a protein A column, followed by peptide affinity purification.

**Storage:** Aliquot and store at -20°C. Avoid repeated freeze/thaw cycles.

**UniProt Primary AC:** Q99075 ([UniProt](#), [ExPASy](#))

**Gene Symbol:** HBEGF

# Datasheet

Version: 2.0.0

Revision date: 21 Aug 2025



**KEGG:** hsa:1839

**String:** [9606.ENSP00000230990](#)

**Molecular Weight:** Calculated MW: 23.1 kDa

**Buffer:** PBS containing 0.09% sodium azide.

**Note:** THIS PRODUCT IS FOR RESEARCH USE ONLY. NOT FOR USE IN DIAGNOSTIC, THERAPEUTIC OR COSMETIC PROCEDURES. NOT FOR HUMAN OR ANIMAL CONSUMPTION.

For Reference Only