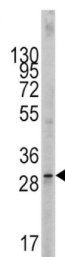
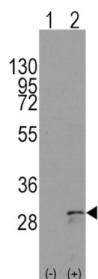


Kit Ligand (KITLG) Antibody

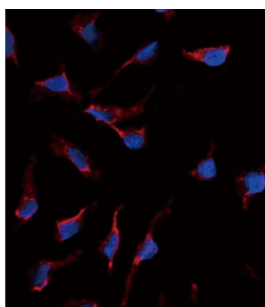
Catalogue No.: abx028356



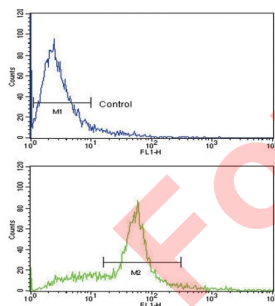
WB analysis of 293 cell line lysates.



WB analysis of (1) non-transfected 293 cell lysates, and (2) 293 cell lysates transiently transfected with the KITLG gene.



IF analysis of HeLa cells, using KITLG antibody (0.025 mg/ml) and AF546-conjugated donkey anti-rabbit IgG. AF546 emits orange fluorescence. DAPI was used for blue counterstaining.



Flow cytometry analysis of WiDr cells (green) compared to a negative control cell (blue), using KITLG antibody and FITC-conjugated goat anti-rabbit secondary antibody.

KITLG is the ligand of the tyrosine-kinase receptor encoded by the KIT locus. This ligand is a pleiotropic factor that acts in utero in germ cell and neural cell development, and hematopoiesis, all believed to reflect a role in cell migration. In adults, it functions pleiotropically, while mostly noted for its continued requirement in hematopoiesis.

Target: Kit Ligand (KITLG)

Clonality: Polyclonal

Datasheet

Version: 4.0.0
Revision date: 06 Mar 2025



Reactivity:	Human
Tested Applications:	ELISA, WB, IF/ICC, FCM
Host:	Rabbit
Recommended dilutions:	WB: 1/1000, IF/ICC: 1/10 - 1/50, FCM: 1/10 - 1/50. Optimal dilutions/concentrations should be determined by the end user.
Conjugation:	Unconjugated
Immunogen:	KLH-conjugated synthetic peptide between 244-273 amino acids from the C-terminal region of human SCF (KITLG).
Isotype:	IgG
Form:	Liquid
Purification:	Purified by saturated ammonium sulfate (SAS) precipitation followed by dialysis against PBS.
Storage:	Aliquot and store at -20°C. Avoid repeated freeze/thaw cycles.
UniProt Primary AC:	P21583 (UniProt , ExPASy)
Gene Symbol:	KITLG
GeneID:	4254
KEGG:	hsa:4254
String:	9606.ENSP00000228280
Molecular Weight:	Calculated MW: 30.9 kDa
Buffer:	PBS containing 0.09% sodium azide.
Specificity:	Predicted to react with Cow, Pig and Horse KITLG.
Concentration:	2 mg/ml
Note:	THIS PRODUCT IS FOR RESEARCH USE ONLY. NOT FOR USE IN DIAGNOSTIC, THERAPEUTIC OR COSMETIC PROCEDURES. NOT FOR HUMAN OR ANIMAL CONSUMPTION.