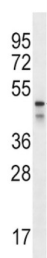
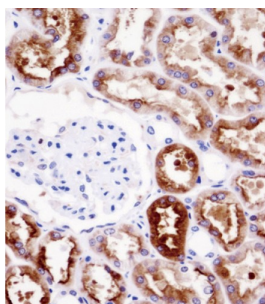


Na(+)/H(+) Exchange Regulatory Cofactor NHE-RF3 (PDZK1) Antibody

Catalogue No.: abx028358



A scaffold protein that connects plasma membrane proteins and regulatory components, regulating their surface expression in epithelial cells apical domains. May be involved in the coordination of a diverse range of regulatory processes for ion transport and second messenger cascades. In complex with SLC9A3R1, may cluster proteins that are functionally dependent in a mutual fashion and modulate the trafficking and the activity of the associated membrane proteins. May play a role in the cellular mechanisms associated with multidrug resistance through its interaction with ABCC2 and PDZK1IP1. May potentiate the CFTR chloride channel activity. May function to connect SCARB1 with the cellular machineries for intracellular cholesterol transport and/or metabolism. May be involved in the regulation of proximal tubular Na (+) dependent inorganic phosphate cotransport therefore playing an important role in tubule function (By similarity).

Target: Na(+)/H(+) Exchange Regulatory Cofactor NHE-RF3 (PDZK1)

Clonality: Polyclonal

Reactivity: Human

Tested Applications: ELISA, WB, IHC

Host: Rabbit

Recommended dilutions: WB: 1/1000, IHC-P: 1/10 - 1/50. Not tested in IHC-F. Optimal dilutions/concentrations should be determined by the end user.

Conjugation: Unconjugated

Immunogen: KLH-conjugated synthetic peptide between 196-224 amino acids from the Central region of human PDZK1.

Datasheet

Version: 1.0.0
Revision date: 15 Jun 2025



Isotype:	IgG
Form:	Liquid
Purification:	Purified through a protein A column, followed by peptide affinity purification.
Storage:	Aliquot and store at -20°C. Avoid repeated freeze/thaw cycles.
UniProt Primary AC:	Q5T2W1 (UniProt , ExPASy)
KEGG:	hsa:5174
String:	9606.ENSP00000394485
Molecular Weight:	Calculated MW: 57.1 kDa
Buffer:	PBS containing 0.09% sodium azide.
Note:	THIS PRODUCT IS FOR RESEARCH USE ONLY. NOT FOR USE IN DIAGNOSTIC, THERAPEUTIC OR COSMETIC PROCEDURES. NOT FOR HUMAN OR ANIMAL CONSUMPTION.

For Reference Only