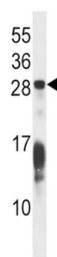


## RAS-Related Protein RAP1B (RAP1B) Antibody

Catalogue No.: abx028359



RAP1B and RAP1A (MIM 179520) belong to a superfamily of RAS (see MIM 190020) like small GTP-binding proteins involved in cell signaling.

**Target:** RAS-Related Protein RAP1B (RAP1B)

**Clonality:** Polyclonal

**Reactivity:** Human

**Tested Applications:** ELISA, WB

**Host:** Rabbit

**Recommended dilutions:** WB: 1/1000. Optimal dilutions/concentrations should be determined by the end user.

**Conjugation:** Unconjugated

**Immunogen:** KLH-conjugated synthetic peptide between 150-178 amino acids from the C-terminal region of human RAP1B.

**Isotype:** IgG

**Form:** Liquid

**Purification:** Purified through a protein A column, followed by peptide affinity purification.

**Storage:** Aliquot and store at -20°C. Avoid repeated freeze/thaw cycles.

**UniProt Primary AC:** P61224 ([UniProt](#), [ExPASy](#))

**KEGG:** hsa:5908

# Datasheet

Version: 2.0.0

Revision date: 27 Aug 2025



**String:** [9606.ENSPO0000250559](#)

**Molecular Weight:** Calculated MW: 20.8 kDa

**Buffer:** PBS containing 0.09% sodium azide.

**Specificity:** Predicted to react with Mouse, Rat, Cow, Chicken, Monkey and Xenopus RAP1B.

**Note:** THIS PRODUCT IS FOR RESEARCH USE ONLY. NOT FOR USE IN DIAGNOSTIC, THERAPEUTIC OR COSMETIC PROCEDURES. NOT FOR HUMAN OR ANIMAL CONSUMPTION.

For Reference Only