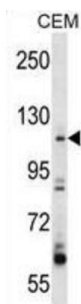


Rho Guanine Nucleotide Exchange Factor 1 (ARHGEF1) Antibody

Catalogue No.: abx028375



Rho GTPases play a fundamental role in numerous cellular processes that are initiated by extracellular stimuli that work through G protein coupled receptors. The encoded protein may form complex with G proteins and stimulate Rho-dependent signals. Multiple alternatively spliced transcript variants have been found for this gene, but the full-length nature of some variants has not been defined.

Target: Rho Guanine Nucleotide Exchange Factor 1 (ARHGEF1)

Clonality: Polyclonal

Reactivity: Human

Tested Applications: ELISA, WB

Host: Rabbit

Recommended dilutions: WB: 1/1000. Optimal dilutions/concentrations should be determined by the end user.

Conjugation: Unconjugated

Immunogen: KLH-conjugated synthetic peptide between 164-192 amino acids from the N-terminal region of human ARHGEF1.

Isotype: IgG

Form: Liquid

Purification: Purified through a protein A column, followed by peptide affinity purification.

Storage: Aliquot and store at -20°C. Avoid repeated freeze/thaw cycles.

UniProt Primary AC: Q92888 ([UniProt](#), [ExPASy](#))

KEGG: hsa:9138

Datasheet

Version: 2.0.0

Revision date: 02 Sep 2025



String: [9606.ENSF00000337261](#)

Molecular Weight: Calculated MW: 102 kDa

Buffer: PBS containing 0.09% sodium azide.

Note: THIS PRODUCT IS FOR RESEARCH USE ONLY. NOT FOR USE IN DIAGNOSTIC, THERAPEUTIC OR COSMETIC PROCEDURES. NOT FOR HUMAN OR ANIMAL CONSUMPTION.

For Reference Only